

## Recombinant Mouse Krt19 protein, His-tagged

**Cat. No.** Krt19-237M    **Lot. No.** (See product label)

### SPECIFICATION

<b>Product Overview</b>	Recombinant Mouse Krt19 protein(NP_001300892.1), fused to His-tag, was expressed in E. coli.
<b>Species</b>	Mouse
<b>Source</b>	E.coli
<b>Description</b>	The protein encoded by this gene is a member of the keratin family. The keratins are intermediate filament proteins responsible for the structural integrity of epithelial cells and are subdivided into cytokeratins and hair keratins. The type I cytokeratins consist of acidic proteins which are arranged in pairs of heterotypic keratin chains. Unlike its related family members, this smallest known acidic cytokeratin is not paired with a basic cytokeratin in epithelial cells. It is specifically expressed in the periderm, the transiently superficial layer that envelops the developing epidermis. Two transcript variants encoding different isoforms have been found for this gene.
<b>Form</b>	20mM Tris-HCl buffer (pH 8.0) containing 0.4M UREA, 10% glycerol
<b>Molecular Mass</b>	The protein has a calculated MW of 45.5 kDa.
<b>AA Sequence</b>	MHHHHHMTSYSYRQTSAMSSFGGTGGGSRIGSGGVFRAPSIHGGSGGRGVSV SSTRFVTSSSGSYGGVRRGGSFSGTLAVSDGLLSGNEKITMQNLNDRLASYLDKVRA LEQANGELEVKIRDWYQKQGGPSPRDYNHYFKTIEDLRDKILGATIDNSKIVLQIDNA RLAADDFRTKFETEHALRLSVEADINGLRRVLDELTLARTDLEMQIESLKEELAYLKK NHEEITALRSQVGGQVSVEVDSTPGVDLAKILSEMRSQYEIMAENRKRKDAEATYLA

 Tel: 1-631-559-9269    1-516-512-3133

 Email: [info@creative-biomart.com](mailto:info@creative-biomart.com)     Fax: 1-631-938-8127

 45-1 Ramsey Road, Shirley, NY 11967, USA



RIEELNTQVAVHSEIQISKTEVTDLRRTLQGLEIELQSQLSMKAALEGTLAETEARY  
GVQLSQIQSVISGFEAQLSDVRADIERQNQEYKQLMDIKSRLEQEIATYRSLLEGQEA  
HYNNLPTPKAI

**Purity** 90 by SDS-PAGE

**Storage** Store it under sterile conditions at -20 to -80°C. It is recommended that the protein be aliquoted for optimal storage. Avoid repeated freeze-thaw cycles.

**Concentration** 0.38 mg/ml

## GENE INFORMATION

**Gene Name** [Krt19 keratin 19 \[ Mus musculus \(house mouse\) \]](#)

**Official Symbol** [Krt19](#)

**Synonyms** End; K19; CK-19; EndoC; Krt1-1; Krt-1.1; Krt1-19; AI663979; Krt-1.19

**Gene ID** [16669](#)

**mRNA Refseq** [NM\\_001313963.1](#)

**Protein Refseq** [NP\\_001300892.1](#)

**UniProt ID** [P19001](#)

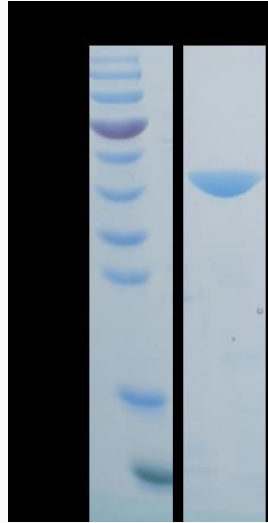
Tel: 1-631-559-9269 1-516-512-3133

Email: [info@creative-biomart.com](mailto:info@creative-biomart.com) Fax: 1-631-938-8127

45-1 Ramsey Road, Shirley, NY 11967, USA



SDS-PAGE of Krt19-  
237M



Tel: 1-631-559-9269 1-516-512-3133

Email: [info@creative-biomart.com](mailto:info@creative-biomart.com) Fax: 1-631-938-8127

45-1 Ramsey Road, Shirley, NY 11967, USA