

Recombinant Mouse Krt24 Protein, Non tagged

Cat. No. Krt24-01M Lot. No. (See product label)

SPECIFICATION

Product Overview	Recombinant Mouse Krt24 Protein without tag was expressed in E. coli.
Species	Mouse
Source	E.coli
Description	Predicted to enable structural molecule activity. Predicted to be located in intermediate filament. Orthologous to human KRT24 (keratin 24).
Molecular Mass	The protein has a calculated MW of 54 kDa.
AA Sequence	<p>MFCSAQKGGSCSSRVSSSGAVGSRGCTGGSSFGGGSSCGLGGGSAWGFQGSSNS WLSGGGSKGSMGGGFGSCSVRGGFGAASSYGGGSGFGGSSGFGGGSGFGGGG GFGGGSSGGFSSYGGSMGCGLGGVSGYDGGLLSGSEKQTMQDLNDRLANYLDKV RALEEANTDLECKIKDWYGKHGKGGSGRDYSQYYSIIEDLKKQILSATCENARMT LQIDNARLAADDFRMKYEHELCLRECLEADINGLRKVLDEMTMTRCDLEMQIEGLTE ELVFLRKNHEEEMKCMQGSSGGDVTVEMNAAPGVDLTKLLNDMRAQYEAMAEQN RQEAERQFNERSASLQAQISSDAGEANCARSEVMELKRTVQTLIEIQLSQLALKCSL EGTLADTEAGYVAQLSGIQAQISSLEEQLSQIRAETQCQSAEYECLLNKTRLEQEIET YRLLNGDGGGCDYRNLVSKNVLSDSGSCAGQGKDPKTRVTKTIIIEVVDGRV SSQVSNISEVKIK</p>
Storage	Store it under sterile conditions at -20 to -80 centigrade. It is recommended that the protein be aliquoted for optimal storage. Avoid repeated freeze-thaw cycles.

 Tel: 1-631-559-9269 1-516-512-3133

 Email: info@creative-biomart.com  Fax: 1-631-938-8127

 45-1 Ramsey Road, Shirley, NY 11967, USA

Concentration 0.087 mg/mL

Storage Buffer 50 mM Tris, pH 8.0, 1M NaCl

GENE INFORMATION

Gene Name Krt24 keratin 24 [*Mus musculus* (house mouse)]

Official Symbol Krt24

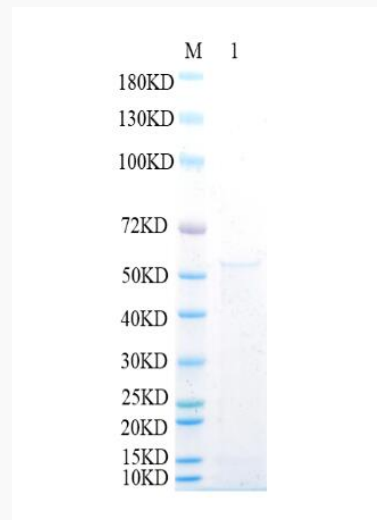
Synonyms KRT24; keratin 24; keratin, type I cytoskeletal 24; K24; CK-24; keratin-24; cytokeratin-24; type I keratin-24; ortholog of keratin 24 KRT24; 2310058N18Rik; 2310075C18Rik;

Gene ID 75706

mRNA Refseq NM_029393

Protein Refseq NP_083669

Reducing 12% SDS-PAGE analysis profile of purified Krt24 (CBB stained)



Tel: 1-631-559-9269 1-516-512-3133

Email: info@creative-biomart.com Fax: 1-631-938-8127

45-1 Ramsey Road, Shirley, NY 11967, USA