

Recombinant Mouse Krt25 protein, His & T7-tagged

Cat. No. Krt25-1599M **Lot. No.** (See product label)

SPECIFICATION

Product Overview	Recombinant Mouse Krt25 aa. (Met1~Asn446 (Accession # Q8VCW2)) fused with N-terminal His & T7 tag was produced in E. coli cells.
Species	Mouse
Source	E.coli
ProteinLength	Met1~Asn446
Form	Freeze-dried powder
Molecular Mass	Predicted Molecular Mass: 52.6kDa
Endotoxin	<1.0EU per 1ug (determined by the LAL method)
Purity	>95%
Applications	SDS-PAGE; WB; ELISA; IP.
Stability	The thermal stability is described by the loss rate. The loss rate was determined by accelerated thermal degradation test, that is, incubate the protein at 37°C for 48h, and no obvious degradation and precipitation were observed. The loss rate is less than 5% within the expiration date under appropriate storage condition.
Storage	Avoid repeated freeze/thaw cycles. Store at 2-8°C for one month. Aliquot and store at

 Tel: 1-631-559-9269 1-516-512-3133

 Email: info@creative-biomart.com  Fax: 1-631-938-8127

 45-1 Ramsey Road, Shirley, NY 11967, USA

-80°C for 12 months.

Storage buffer Supplied as lyophilized form in PBS, pH7.4, containing 5% trehalose, 0.01% sarcosyl.

Reconstitution Reconstitute in sterile PBS, pH7.2-pH7.4.

Isoelectric Point 5

GENE INFORMATION

Gene Name Krt25 keratin 25 [Mus musculus (house mouse)]

Official Symbol Krt25

Synonyms Krt25; keratin 25; Ka38; Krt25a; mIRSa1; 4631426H08Rik; keratin, type I cytoskeletal 25; CK-25; K25; cytokeratin-25; keratin 25A; krt25; type I inner root sheath-specific keratin-K25irs1; type I keratin KA38

Gene ID 70810

mRNA Refseq NM_133730.1

Protein Refseq NP_598491.1

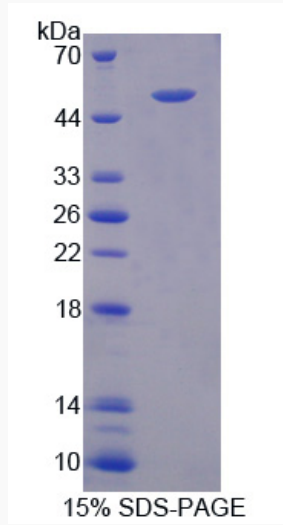
UniProt ID Q8VCW2

 Tel: 1-631-559-9269 1-516-512-3133

 Email: info@creative-biomart.com  Fax: 1-631-938-8127

 45-1 Ramsey Road, Shirley, NY 11967, USA

SDS-PAGE



 Tel: 1-631-559-9269 1-516-512-3133

 Email: info@creative-biomart.com  Fax: 1-631-938-8127

 45-1 Ramsey Road, Shirley, NY 11967, USA