

Recombinant Mouse Krt28 protein, His & GST-tagged

Cat. No. Krt28-1600M Lot. No. (See product label)

SPECIFICATION

Product Overview	Recombinant Mouse Krt28 aa. (Met1~Phe462 (Accession # A6BLY7)) fused with N-terminal His & GST tag was produced in E. coli cells.
Species	Mouse
Source	E.coli
ProteinLength	Met1~Phe462
Form	Freeze-dried powder
Molecular Mass	Predicted Molecular Mass: 80.3kDa
Endotoxin	<1.0EU per 1ug (determined by the LAL method)
Purity	>95%
Applications	SDS-PAGE; WB; ELISA; IP.
Stability	The thermal stability is described by the loss rate. The loss rate was determined by accelerated thermal degradation test, that is, incubate the protein at 37°C for 48h, and no obvious degradation and precipitation were observed. The loss rate is less than 5% within the expiration date under appropriate storage condition.
Storage	Avoid repeated freeze/thaw cycles. Store at 2-8°C for one month. Aliquot and store at

 Tel: 1-631-559-9269 1-516-512-3133

 Email: info@creative-biomart.com  Fax: 1-631-938-8127

 45-1 Ramsey Road, Shirley, NY 11967, USA

-80°C for 12 months.

Storage buffer Supplied as lyophilized form in PBS, pH7.4, containing 5% trehalose, 0.01% sarcosyl.

Reconstitution Reconstitute in sterile PBS, pH7.2-pH7.4.

Isoelectric Point 5.2

GENE INFORMATION

Gene Name Krt28 keratin 28 [*Mus musculus* (house mouse)]

Official Symbol Krt28

Synonyms Krt28; keratin 28; Krt25d; 4733401L19Rik; keratin, type I cytoskeletal 28; CK-28; K25D; K28; cytokeratin-28; keratin 25D; krt28; type I inner root sheath-specific keratin-K25irs4

Gene ID 70843

mRNA Refseq NM_027574.1

Protein Refseq NP_081850.1

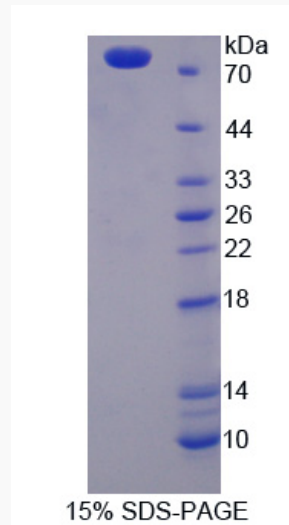
UniProt ID A6BLY7

 Tel: 1-631-559-9269 1-516-512-3133

 Email: info@creative-biomart.com  Fax: 1-631-938-8127

 45-1 Ramsey Road, Shirley, NY 11967, USA

SDS-PAGE



 Tel: 1-631-559-9269 1-516-512-3133

 Email: info@creative-biomart.com  Fax: 1-631-938-8127

 45-1 Ramsey Road, Shirley, NY 11967, USA