

Recombinant Mouse Krt4 Protein, His-tagged

Cat. No. Krt4-1077M **Lot. No.** (See product label)

SPECIFICATION

Product Overview	Recombinant Mouse Krt4 Protein (Asp194-Val301) with His tag was expressed in E. coli.
Species	Mouse
Source	E.coli
ProteinLength	Asp194-Val301
Description	Involved in epithelial cell differentiation and negative regulation of epithelial cell proliferation. Predicted to be located in cell surface and keratin filament. Is expressed in several structures, including alimentary system; lower urinary tract; sensory organ; skin; and trachea. Used to study hereditary mucosal leukokeratosis. Human ortholog(s) of this gene implicated in hereditary mucosal leukokeratosis. Orthologous to human KRT4 (keratin 4).
Form	Freeze-dried powder
Molecular Mass	Predicted Molecular Mass: 16.3 kDa; Accurate Molecular Mass: 16 kDa
Purity	> 95%
Applications	Positive Control; Immunogen; SDS-PAGE; WB.
Stability	The thermal stability is described by the loss rate. The loss rate was determined by

 Tel: 1-631-559-9269 1-516-512-3133

 Email: info@creative-biomart.com  Fax: 1-631-938-8127

 45-1 Ramsey Road, Shirley, NY 11967, USA

accelerated thermal degradation test, that is, incubate the protein at 37 centigrade for 48h, and no obvious degradation and precipitation were observed. The loss rate is less than 5% within the expiration date under appropriate storage condition.

Storage

Avoid repeated freeze/thaw cycles. Store at 2-8 centigrade for one month. Aliquot and store at -80 centigrade for 12 months.

Storage Buffer

PBS, pH7.4, containing 0.01% SKL, 1mM DTT, 5% Trehalose and Proclin300.

Reconstitution

Reconstitute in 20mM Tris, 150mM NaCl (pH8.0) to a concentration of 0.1-1.0 mg/mL. Do not vortex.

GENE INFORMATION

Gene Name

Krt4 keratin 4 [*Mus musculus* (house mouse)]

Official Symbol

Krt4

Synonyms

Krt4; keratin 4; K4; Krt2-4; Krt-2.4; AW108092; keratin, type II cytoskeletal 4; 57kDa keratin; 57kd keratin; CK-4; cytokeratin-4; cytoskeletal 57 kDa keratin; keratin complex 2, basic, gene 4; type-II keratin Kb4

Gene ID

16682

mRNA Refseq

NM_008475

Protein Refseq

NP_032501

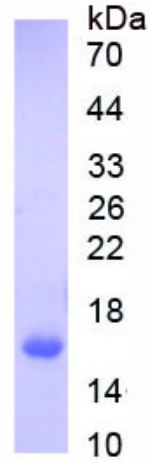
UniProt ID

P07744

 Tel: 1-631-559-9269 1-516-512-3133

 Email: info@creative-biomart.com  Fax: 1-631-938-8127

 45-1 Ramsey Road, Shirley, NY 11967, USA



Tel: 1-631-559-9269 1-516-512-3133

Email: info@creative-biomart.com Fax: 1-631-938-8127

45-1 Ramsey Road, Shirley, NY 11967, USA