

## Recombinant Mouse Krt71 protein, His-tagged

Cat. No. Krt71-1433M    Lot. No. (See product label)

### SPECIFICATION

<b>Product Overview</b>	Recombinant Mouse Krt71 aa. (Arg132~Glu440 (Accession # Q9R0H5)) fused with N-terminal His tag was produced in E. coli cells.
<b>Species</b>	Mouse
<b>Source</b>	E.coli
<b>ProteinLength</b>	Arg132~Glu440
<b>Form</b>	Freeze-dried powder
<b>Molecular Mass</b>	Predicted Molecular Mass: 37.2kDa
<b>Endotoxin</b>	<1.0EU per 1ug (determined by the LAL method)
<b>Purity</b>	>95%
<b>Applications</b>	SDS-PAGE; WB; ELISA; IP.
<b>Stability</b>	The thermal stability is described by the loss rate. The loss rate was determined by accelerated thermal degradation test, that is, incubate the protein at 37°C for 48h, and no obvious degradation and precipitation were observed. The loss rate is less than 5% within the expiration date under appropriate storage condition.
<b>Storage</b>	Avoid repeated freeze/thaw cycles. Store at 2-8°C for one month. Aliquot and store at

 Tel: 1-631-559-9269    1-516-512-3133

 Email: [info@creative-biomart.com](mailto:info@creative-biomart.com)     Fax: 1-631-938-8127

 45-1 Ramsey Road, Shirley, NY 11967, USA

-80°C for 12 months.

**Storage buffer**

Supplied as lyophilized form in 20mM Tris, 150mM NaCl, pH8.0, containing 1mM EDTA, 1mM DTT, 0.01% sarcosyl, 5% trehalose, and preservative.

**Reconstitution**

Reconstitute in sterile ddH2O.

**Isoelectric Point**

5.4

## GENE INFORMATION

**Gene Name**

[Krt71 keratin 71 \[ Mus musculus \(house mouse\) \]](#)

**Official Symbol**

[Krt71](#)

**Synonyms**

Krt71; keratin 71; Ca; Cu; Cal4; mK6irs; Krt2-6g; mK6irs1; AA589543; keratin, type II cytoskeletal 71; CK-6G; CK-71; K6G; K71; caracul; cytokeratin-6G; cytokeratin-71; keratin complex 2, basic, gene 6g; keratin complex 2, gene 6g; keratin-6G; mK6irs1/Krt2-6g; type II inner root sheath-specific keratin-K6irs1; type-II keratin Kb34

**Gene ID**

[56735](#)

**mRNA Refseq**

[NM\\_019956.1](#)

**Protein Refseq**

[NP\\_064340.1](#)

**UniProt ID**

[Q9R0H5](#)

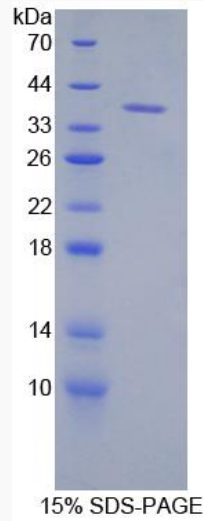
 Tel: 1-631-559-9269 1-516-512-3133

 Email: [info@creative-biomart.com](mailto:info@creative-biomart.com)  Fax: 1-631-938-8127

 45-1 Ramsey Road, Shirley, NY 11967, USA



SDS-PAGE



Tel: 1-631-559-9269 1-516-512-3133

Email: [info@creative-biomart.com](mailto:info@creative-biomart.com) Fax: 1-631-938-8127

45-1 Ramsey Road, Shirley, NY 11967, USA