

# Recombinant HPV33 major capsid L1 protein, His-tagged

Cat. No. L1-03H Lot. No. (See product label)

## SPECIFICATION

<b>Product Overview</b>	Recombinant HPV33 major capsid L1 protein with C-terminal His6 fusion tag was expressed in E. coli.
<b>Species</b>	Human Papillomavirus Type 33
<b>Source</b>	E.coli
<b>ProteinLength</b>	507
<b>Description</b>	Forms an icosahedral capsid with a T=7 symmetry and a 50 nm diameter. The capsid is composed of 72 pentamers linked to each other by disulfide bonds and associated with L2 proteins. Binds to heparan sulfate proteoglycans on cell surface of basal layer keratinocytes to provide initial virion attachment. This binding mediates a conformational change in the virus capsid that facilitates efficient infection. The virion enters the host cell via endocytosis. During virus trafficking, L1 protein dissociates from the viral DNA and the genomic DNA is released to the host nucleus. The virion assembly takes place within the cell nucleus. Encapsulates the genomic DNA together with protein L2.
<b>Form</b>	Buffered aqueous solution
<b>Molecular Mass</b>	57 kDa
<b>AA Sequence</b>	MSVWRPSEATVYLPPVPVSKVVSTDEYVSRTSIYYYAGSSRLLAVGHPYFSIKNPTN AKKLLVPKVSGLQYRVFRVRLPDPNKFDPDTSFYNPDTQRLVWACVGLIQRGQP

 Tel: 1-631-559-9269 1-516-512-3133

 Email: [info@creative-biomart.com](mailto:info@creative-biomart.com)  Fax: 1-631-938-8127

 45-1 Ramsey Road, Shirley, NY 11967, USA

LGVGISGHPLLNKFDDTETGNKYPGQPGADNRECLSM DYKQTQLC LLGCKPPTGEH  
 WGKGVACTNAAPANDCPPELINTIIEDGDMVDTGFGC MDFKTLQANKSDVPIDICG  
 STCKYPDYLKMTSEPYGDSLFFFLRREQMFVRHFFNRAGTLGEAVPDDLYIKSGT  
 TASIQSSAFFPTPSGSMVTSESQ LFNKPYWLQRAQGHNNGICWGNQVFVTVVDTTR  
 STNMTLCTQVTS DSTYKNENFKEYIRHVEEYDLQFV FQLCKVTLTAEVMTYIHAMNP  
 DILEDWQFGLTPPPSASLQD TYRFVTSQAITCQKT VPPKEKEDPLGKYTFWEVDLKE  
 KFSADLDQFPLGRKFLLQAGL KAKPKLKRAAPTSTR TSSAKRKKVKKHHHHHHHH

<b>Endotoxin</b>	1EU/ug by LAL
<b>Purity</b>	90% by SDS-PAGE
<b>Applications</b>	Antigen for antibody production ELISA
<b>Storage</b>	Store it under sterile conditions at -20 to -80 °C. It is recommended that the protein be aliquoted for optimal storage. Avoid repeated freeze-thaw cycles.
<b>Concentration</b>	0.23 mg/ml
<b>Storage Buffer</b>	Solution in PBS, 0.05%SKL, pH7.4

## GENE INFORMATION

<b>Gene Name</b>	L1
<b>Official Symbol</b>	major capsid L1 protein
<b>Synonyms</b>	major capsid L1 protein
<b>Gene ID</b>	1489082

 Tel: 1-631-559-9269 1-516-512-3133

 Email: [info@creative-biomart.com](mailto:info@creative-biomart.com)  Fax: 1-631-938-8127

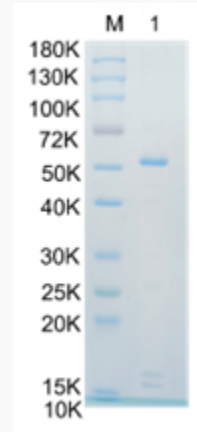
 45-1 Ramsey Road, Shirley, NY 11967, USA

mRNA Refseq M12732.1

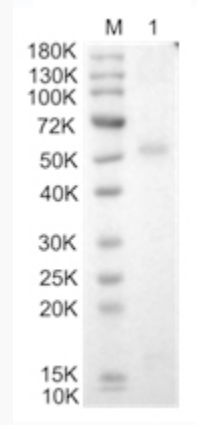
Protein Refseq P06416.1

UniProt ID P06416

**SDS-PAGE**




**WB**



 Tel: 1-631-559-9269 1-516-512-3133

 Email: [info@creative-biomart.com](mailto:info@creative-biomart.com)  Fax: 1-631-938-8127

 45-1 Ramsey Road, Shirley, NY 11967, USA