

Recombinant HPV35 major capsid L1 Protein, His-tag

Cat. No. L1-04H Lot. No. (See product label)

SPECIFICATION

Product Overview	Recombinant HPV35 major capsid L1 Protein with C-terminal His6 fusion tag was expressed in E. coli.
Species	Human Papillomavirus 35
Source	E.coli
ProteinLength	504
Description	Forms an icosahedral capsid with a T=7 symmetry and a 50 nm diameter. The capsid is composed of 72 pentamers linked to each other by disulfide bonds and associated with L2 proteins. Binds to heparan sulfate proteoglycans on cell surface of basal layer keratinocytes to provide initial virion attachment. This binding mediates a conformational change in the virus capsid that facilitates efficient infection. The virion enters the host cell via endocytosis. During virus trafficking, L1 protein dissociates from the viral DNA and the genomic DNA is released to the host nucleus. The virion assembly takes place within the cell nucleus. Encapsulates the genomic DNA together with protein L2.
Form	Buffered aqueous solution
Molecular Mass	57 kDa
AA Sequence	MSLWRSNEATVYLPPVSVSKVVSTDEYVTRTNIYYHAGSSRLLAVGHPYYAIKKQDS NKIAVPKVSGLQYRVFRVKLPDPNKFVGFDPDTSFYDPASQRLVWACTGVEVGRGQPL

 Tel: 1-631-559-9269 1-516-512-3133

 Email: info@creative-biomart.com  Fax: 1-631-938-8127

 45-1 Ramsey Road, Shirley, NY 11967, USA

GVGISGHPLLNLDDTENSNKYVGNSTGDNRECISMDYKQTQLCLIGCRPPIGEHW
 GKGTPCNANQVKAGECPPELLELNTVLQDGDMDVDTGFGAMDFTTLQANKSDVPLDIC
 SSICKYPDYLMVSEPYGDMLFFYLRRREQMFVRHLFNAGTVGETVPADLYIKGTTG
 TLPSTSYFPTPSGSMVTSDAQIFNKPYWLQRAQGHNNNGICWSNQLFVTVDTTTRST
 NMSVCSAVSSSDSTYKNDNFKEYLRHGEEYDLQFIFQLCKITLTADVMTYIHSMNPSI
 LEDWNFGLTPPPSGTLEDTYRYVTSQAVTCQKPSAPKPKDDPLKNYTFWEVDLKEK
 FSADLDQFPLGRKFLQAGLKARPNFRLGKRAAPASTSKKSSTKRRHHHHHH

Endotoxin	0.01EU/ug by LAL
Purity	95% by SDS-PAGE
Applications	Antigen for antibody production ELISA
Storage	Store it under sterile conditions at -20 to -80 °C. It is recommended that the protein be aliquoted for optimal storage. Avoid repeated freeze-thaw cycles.
Concentration	0.173 mg/ml
Storage Buffer	Solution in 20mM Tris, 0.5 M NaCl, pH6.2, 0.5M Arginine10% Glycerol

GENE INFORMATION

Gene Name	L1
Official Symbol	major capsid L1 protein
Synonyms	major capsid L1 protein
Gene ID	1403644

 Tel: 1-631-559-9269 1-516-512-3133

 Email: info@creative-biomart.com  Fax: 1-631-938-8127

 45-1 Ramsey Road, Shirley, NY 11967, USA

mRNA Refseq [X74477.1](#)

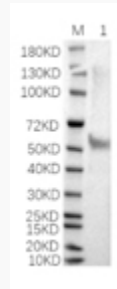
Protein Refseq [P27232.2](#)

UniProt ID [P27232](#)

SDS-PAGE



WB



 Tel: 1-631-559-9269 1-516-512-3133

 Email: info@creative-biomart.com  Fax: 1-631-938-8127

 45-1 Ramsey Road, Shirley, NY 11967, USA