

Recombinant HPV58 major capsid L1 Protein, His-tagged

Cat. No. L1-05H Lot. No. (See product label)

SPECIFICATION

Product Overview	Recombinant HPV58 major capsid L1 Protein with C-terminal His6 fusion tag was expressed in E. coli.
Species	Human Papillomavirus 58
Source	E.coli
ProteinLength	508
Description	Forms an icosahedral capsid with a T=7 symmetry and a 50 nm diameter. The capsid is composed of 72 pentamers linked to each other by disulfide bonds and associated with L2 proteins. Binds to heparan sulfate proteoglycans on cell surface of basal layer keratinocytes to provide initial virion attachment. This binding mediates a conformational change in the virus capsid that facilitates efficient infection. The virion enters the host cell via endocytosis. During virus trafficking, L1 protein dissociates from the viral DNA and the genomic DNA is released to the host nucleus. The virion assembly takes place within the cell nucleus. Encapsulates the genomic DNA together with protein L2.
Form	Buffered aqueous solution
Molecular Mass	57.5 kDa
AA Sequence	MQMSVWRPSEATVYLPPVPVSKVVSTDEYVSRTSIYYYAGSSRLLAVGNPYFSIKSP NNNKKVLVPKVSGLQYRVFRVRLPDPNKFPGPDTSFYNPDTQRLVWACVGLIGRG

 Tel: 1-631-559-9269 1-516-512-3133

 Email: info@creative-biomart.com  Fax: 1-631-938-8127

 45-1 Ramsey Road, Shirley, NY 11967, USA

QPLGVGVSGHPYLNKFDDTETSNRYPAQPGSDNRECLSM DYKQTQLCLIGCKPPT
 GEHWGKGVACNNNAATDCPPELNFNSIIEDGDMVDTGFGC MDFGTLQANKSDVPI
 DICNSTCKYPDYLKMASEPYGDSLFFFLRREQMFVRHFFNRAGKLGEAVPDDLYIKG
 SGNTAVIQSSAFFPTPSGSIVTSESQLFNKPYWLQRAQGHNNGICWGNQLFVTVVD
 TTRSTNMTLCTEVTKEGTYKNDNFKEYVRHVEEYDLQFVFLCKITLTAEIMTYIHTM
 DSNILEDWQFGLTPPPSASLQD TYRFVTSQAITCQKTAPPKEKEDPLNKYTFWEVNL
 KEKFSADLDQFPLGRKFLLQSGLKAKPRLKRSAPTTRAPSTKRKKVKKHHHHHHHH

Endotoxin	1EU/ug by LAL
Purity	90% by SDS-PAGE
Applications	Antigen for antibody production ELISA
Storage	Store it under sterile conditions at -20 to -80 °C. It is recommended that the protein be aliquoted for optimal storage. Avoid repeated freeze-thaw cycles.
Concentration	0.37 mg/ml
Storage Buffer	Solution in PBS, 0.05%SKL, pH7.4

GENE INFORMATION

Gene Name	L1
Official Symbol	major capsid L1 protein
Synonyms	major capsid L1 protein
Gene ID	1497438

 Tel: 1-631-559-9269 1-516-512-3133

 Email: info@creative-biomart.com  Fax: 1-631-938-8127

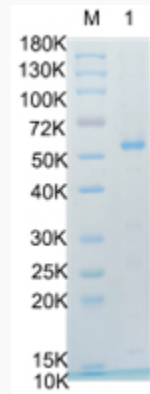
 45-1 Ramsey Road, Shirley, NY 11967, USA

mRNA Refseq [D90400.1](#)

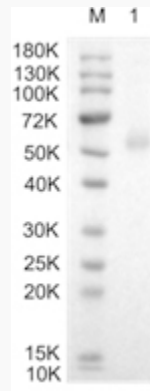
Protein Refseq [P26535.1](#)

UniProt ID [P26535](#)

SDS-PAGE



WB



 Tel: 1-631-559-9269 1-516-512-3133

 Email: info@creative-biomart.com  Fax: 1-631-938-8127

 45-1 Ramsey Road, Shirley, NY 11967, USA