

# Recombinant Human papillomavirus type 18 L1 Protein, His-tagged

Cat. No. L1-43H Lot. No. (See product label)

## SPECIFICATION

<b>Product Overview</b>	Recombinant Human papillomavirus type 18 L1 Protein, fused to His-tag, was expressed in E. coli.
<b>Species</b>	Human papillomavirus type 18
<b>Source</b>	E.coli
<b>ProteinLength</b>	51-568 a.a.
<b>Description</b>	major capsid L1 protein
<b>Form</b>	PBS, 0.05%SKL, pH7.4.
<b>Molecular Mass</b>	58.9 kDa
<b>AA Sequence</b>	<p>MRNVNVFPIFLQMALWRPSDNTVYLPPPSVARVVNTDDYVTPTSIFYHAGSSRLLTV  GNPYFRVPAGGGNKQDIPKVSAYQYRVFRVQLPDPNKFGLPDTSIYNPETQRLVWA  CAGVEIGRGQPLGVGLSGHPFYNKLDDTESSHAATSNVSEDVRDENVSDYKQTQL  CILGCAPAIGEHWAKGTACKSRPLSQGDCCPPELKNVLEDDGDMVDTGYGAMDFST  LQDTKCEVPLDICQSICKYPDYLQMSADPYGDSMFFCLRREQLFARHFWNRAGTM  GDTVPQSLYIKGTGMPASPGSCVYSPSPSGSIVTSDSQLFNKPYWLHKAQGHNNGV  CWHNQLFVTVVDTPSTNLTICASTQSPVPGQYDATKFKQYSRHVEEYDLQFIFQLC  TITLTADVMSYIHSMNSSILEDWNFGVPPPPTTSLVDTYRFVQSVAITCQKDAAPAEN  KDPYDKLKFVNVDLKEKFSLDLDQYPLGRKFLVQAGLRRKPTIGPRKRSAPSATTSS</p>

 Tel: 1-631-559-9269 1-516-512-3133

 Email: [info@creative-biomart.com](mailto:info@creative-biomart.com)  Fax: 1-631-938-8127

 45-1 Ramsey Road, Shirley, NY 11967, USA

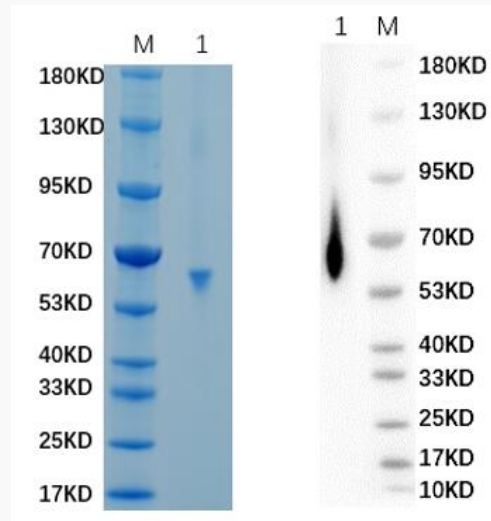
	KPAKRVRVRARKHHHHHHHHH
<b>Endotoxin</b>	1EU/ug
<b>Purity</b>	>90%
<b>Storage</b>	Store it under sterile conditions at -20 to -80 centigrade. It is recommended that the protein be aliquoted for optimal storage. Avoid repeated freeze-thaw cycles.
<b>Concentration</b>	0.4 mg/ml
<b>GENE INFORMATION</b>	
<b>Gene Name</b>	<a href="#">L1 major capsid L1 protein [ Alphapapillomavirus 7 ]</a>
<b>Official Symbol</b>	<a href="#">L1</a>
<b>Synonyms</b>	HpV18gp8
<b>Gene ID</b>	<a href="#">1489090</a>
<b>Protein Refseq</b>	<a href="#">NP_040317</a>
<b>UniProt ID</b>	<a href="#">P06794</a>

 Tel: 1-631-559-9269 1-516-512-3133

 Email: [info@creative-biomart.com](mailto:info@creative-biomart.com)  Fax: 1-631-938-8127

 45-1 Ramsey Road, Shirley, NY 11967, USA

**SDS-PAGE**



Reducing 12% SDS-PAGE and WB analysis profile of purified HPV18 (CBB stained).

 Tel: 1-631-559-9269 1-516-512-3133

 Email: [info@creative-biomart.com](mailto:info@creative-biomart.com)  Fax: 1-631-938-8127

 45-1 Ramsey Road, Shirley, NY 11967, USA