

Recombinant Human papillomavirus 33 L1 Protein, His-tagged

Cat. No. L1-45H Lot. No. (See product label)

SPECIFICATION

Product Overview	Recombinant Human papillomavirus 33 L1 Protein, fused to His-tag, was expressed in E. coli.
Species	Human papillomavirus 33
Source	E.coli
Description	late protein
Form	PBS, 0.05%SKL, pH7.4.
Molecular Mass	57 kDa
AA Sequence	MSVWRPSEATVYLPPVPVSKVVSTDEYVSRTSIYYYAGSSRLLAVGHPYFSIKNPTN AKKLLVPKVSGLQYRVFRVRLPDPNKFGFPDTSFYNPDTQRLWACVGLEIGRGQP LGVGISGHPLLNFDDTETGNKYPGQPGADNRECLSM DYKQTQLCLLGCKPPTGEH WGKGVACTNAAPANDCPPELINTIIEDGDMVDTGFGCMDFKTLQANKSDVPIDICG STCKYPDYLKMTSEPYGDSLFFFLRREQMFVRHFFNRAGTLGEAVPDDLYIKSGST TASIQSSAFFPTPSGSMVTSESQ LFNKPYWLQRAQGHNNGICWGNQVFVTVVDTTR STNMTLCTQVTS DSTYKNENFKEYIRHVEEYDLQFVFQLCKVTLTAEVMTYIHAMNP DILEDWQFGLTPPPSASLQD TYRFVTSQAITCQKT VPPKEKEDPLGKYTFWEVDLKE KFSADLDQFPLGRKFL LQAGLKAKPKLKRAAPTSTR TSSAKRKKVKKHHHHHHHHH
Endotoxin	1EU/ug

 Tel: 1-631-559-9269 1-516-512-3133

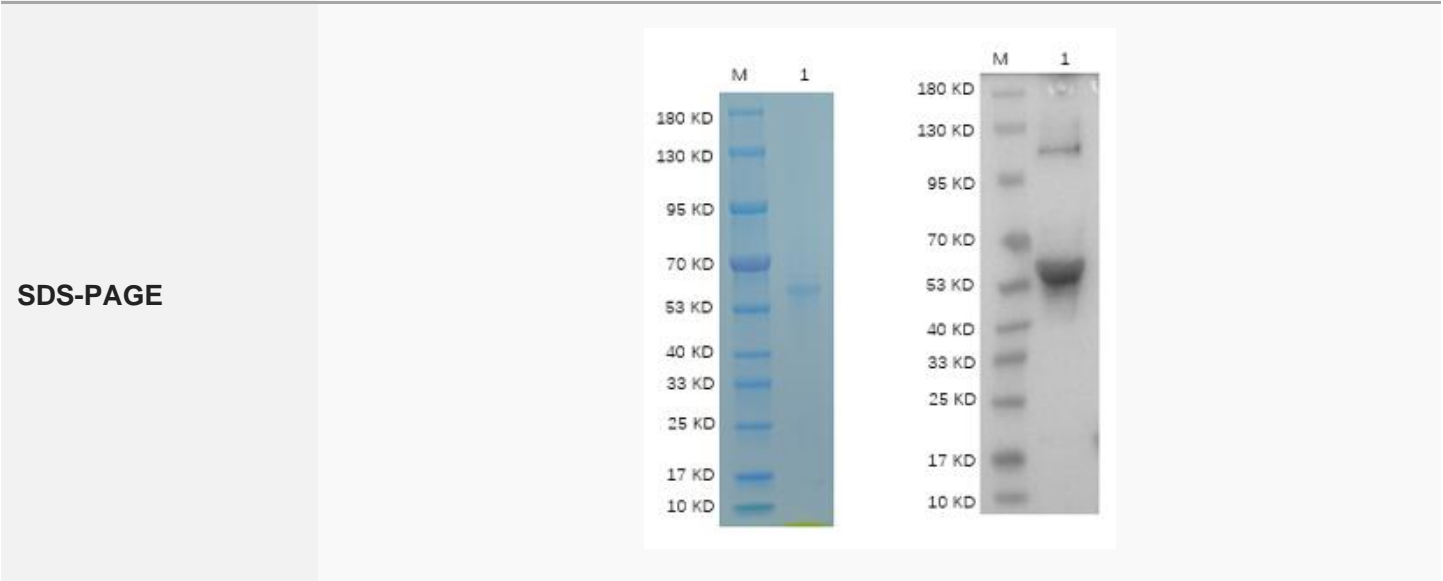
 Email: info@creative-biomart.com  Fax: 1-631-938-8127

 45-1 Ramsey Road, Shirley, NY 11967, USA

Purity	>90%
Storage	Store it under sterile conditions at -20 to -80 centigrade. It is recommended that the protein be aliquoted for optimal storage. Avoid repeated freeze-thaw cycles.
Concentration	0.13 mg/ml

GENE INFORMATION

Gene Name	L1 late protein [Human papillomavirus type 32]
Official Symbol	L1
Gene ID	1489426
Protein Refseq	NP_041806
UniProt ID	P06416





Reducing 12% SDS-PAGE and WB analysis profile of purified HPV33 (CBB stained).

 Tel: 1-631-559-9269 1-516-512-3133

 Email: info@creative-biomart.com  Fax: 1-631-938-8127

 45-1 Ramsey Road, Shirley, NY 11967, USA