

Recombinant Human papillomavirus 58 L1 Protein, His-tagged

Cat. No. L1-47H Lot. No. (See product label)

SPECIFICATION

Product Overview	Recombinant Human papillomavirus 58 L1 Protein, fused to His-tag, was expressed in E. coli.
Species	Human papillomavirus 58
Source	E.coli
Description	major capsid L1 protein
Form	PBS, 0.05%SKL, pH7.4
Molecular Mass	57.5 kDa
AA Sequence	<p>MQMSVWRPSEATVYLPPVPVSKVVSTDEYVSRTSIYYYAGSSRLLAVGNPYFSIKSP NNNKKVLVPKVSGLQYRVFRVRLPDPNKFGLPDTSFYNPDTQRLVWACVGLIIGRG QPLGVGVSGHPYLNKFDDTETSNRYPAQPGSDNRECLSM DYKQTQLCLIGCKPPT GEHWGKGVACNNNAATDCPPELNFNSIIEDGDMVDTGFGCMDFGTLQANKSDVPI DICNSTCKYPDYLKMASEPYGDSLFFFLRREQMFVRHFFNRAGKLGEAVPDDLYIKG SGNTAVIQSSAFFPTPSGSIVTSESQLFNKPYWLQRAQGHNNGICWGNQLFVTVVD TTRSTNMTLCTEVTKEGTYKDNDFKEYVRHVEEYDLQFVFLCKITLTAEIMTYIHTM DSNILEDWQFGLTPPPSASLQD TYRFVTSQAITCQKTAPPKEKEDPLNKYTFWEVNL KEKFSADLDQFPLGRKFLLQSGLKAKPRLKRSAPTTRAPSTKRKKVKKHHHHHHHHH</p>
Endotoxin	1EU/ug

 Tel: 1-631-559-9269 1-516-512-3133

 Email: info@creative-biomart.com  Fax: 1-631-938-8127

 45-1 Ramsey Road, Shirley, NY 11967, USA

Purity >90%

Storage

Store it under sterile conditions at -20 to -80 centigrade. It is recommended that the protein be aliquoted for optimal storage. Avoid repeated freeze-thaw cycles.

Concentration 0.2 mg/ml

GENE INFORMATION

Gene Name L1 major capsid L1 protein [Human papillomavirus type 53]

Official Symbol L1

Synonyms HpV53gp7

Gene ID 1489468

Protein Refseq NP_041848

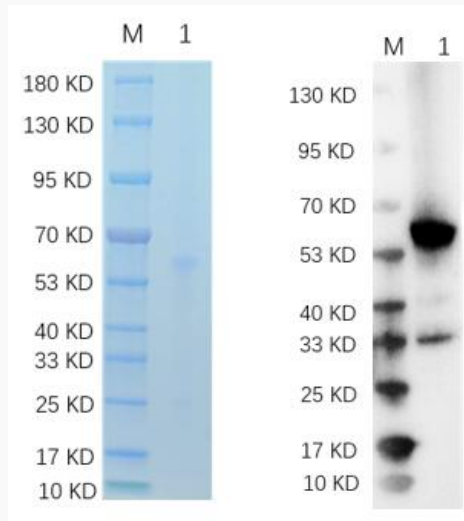
UniProt ID P26535

 Tel: 1-631-559-9269 1-516-512-3133

 Email: info@creative-biomart.com  Fax: 1-631-938-8127

 45-1 Ramsey Road, Shirley, NY 11967, USA

SDS-PAGE



Reducing 12% SDS-PAGE and WB analysis profile of purified HPV58 (CBB stained).

 Tel: 1-631-559-9269 1-516-512-3133

 Email: info@creative-biomart.com  Fax: 1-631-938-8127

 45-1 Ramsey Road, Shirley, NY 11967, USA