

## Active Recombinant Human L1CAM protein, His-tagged

Cat. No. L1CAM-02H Lot. No. (See product label)

### SPECIFICATION

<b>Product Overview</b>	Recombinant human L1CAM, fused to His-tag at C-terminus, was expressed in insect cell and purified by using conventional chromatography techniques.
<b>Species</b>	Human
<b>Source</b>	Insect Cells
<b>ProteinLength</b>	20-1115
<b>Description</b>	<p>The protein encoded by this gene is an axonal glycoprotein belonging to the immunoglobulin supergene family. The ectodomain, consisting of several immunoglobulin-like domains and fibronectin-like repeats (type III), is linked via a single transmembrane sequence to a conserved cytoplasmic domain. This cell adhesion molecule plays an important role in nervous system development, including neuronal migration and differentiation. Mutations in the gene cause X-linked neurological syndromes known as CRASH (corpus callosum hypoplasia, retardation, aphasia, spastic paraplegia and hydrocephalus). Alternative splicing of this gene results in multiple transcript variants, some of which include an alternate exon that is considered to be specific to neurons.</p>
<b>Form</b>	Liquid
<b>Bio-activity</b>	Measured by the ability of the immobilized protein to support the adhesion of Neuro-2a mouse neuroblastoma cells. When cells are added to human L1CAM coated plates 1

 Tel: 1-631-559-9269 1-516-512-3133

 Email: [info@creative-biomart.com](mailto:info@creative-biomart.com)  Fax: 1-631-938-8127

 45-1 Ramsey Road, Shirley, NY 11967, USA

µg/mL. This effect is more to 30 %.

**Molecular Mass** 123.6 kDa (1104aa)

**AA Sequence**

IQIPEELMEPPVITEQSPRRLVVFPTDDISLKCEASGKPEVQFRWTRDGVHFKPKEEL  
 GVTVYQSPHSGSFTITGNNSNFAQRFQGIYRCFASNKLG TAM SHEIRLMAEGAPKW  
 PKETVKPVEVEEGESVVLPCNPPPSAEPLRIYWMNSKILHIKQDERVTMGQNGNLYF  
 ANVLTSDNHSDYICHAHFPGTRTIIQKEPIDLRVKATNSMIDRKPRLLFPTNSSSHLVA  
 LQGQPLVLECIAEGFPTPTIKWLRPSGPMPADRVTYQNHNKTLQLLKVGEEDDGEY  
 RCLAENSLGSARHAYYVTVEAAPYWLHKPQSHLYGPGETARLDCQVQGRPQPEVT  
 WRINGIPVEELAKDQKYRIQRGALILSNVQPSDTMVTQCEARNRHGLLLANAYIYVVQ  
 LPAKILTADNQTYMAVQGSTAYLLCKAFGAPVPSVQWLDDEDGTTVLQDERFFPYAN  
 GTLGIRDLQANDTGRYFCLAANDQNNVTIMANLKVKDATQITQGPRSTIEKKGSRVT  
 FTCQASFDPSLQPSITWRGDGRDLQELGDSDKYFIEDGRLVIHSLDYSDQGNYSVCV  
 ASTELDVVESRAQLLVGSPGPVRLVLSDLHLLTQSQVRVSWSPAEDHNAPIEKYD  
 IEFEDKEMAPEKWYSLGKVPGNQTSTTLKLSPIYVHYTFRVTAINKYGPGEPSVSET  
 VVTPEAAPEKPNVDVKGEGNETTNMVITWKPLRWMDWNAPQVQYRVQWRPQGTR  
 GPWQEQIVSDPFLVVSNTSTFVPIYQAVNSQKGPPEPQVTIGYSGEDYPQAIPE  
 LEGIEILNSSAVLVKWRPVDLAQVKGHLRGYNVTYWREGSQRKHSKRHIHKDHVVV  
 PANTTSVILSGLRPYSSYHLEVQAFNGRSGPASEFTFSTPEGVPGHPEALHLECQS  
 NTSLLLWQPPLSHNGVLTGYVLSYHPLDEGGKQLSFNLRDPELRTHNLTDLSPH  
 LRYRFQLQATTKEGPGEAIVREGGTMALSGISDFGNISATAGENYSVVSWVPKEGQ  
 CNFRFHILFKALGEEKGGASLSPQYVSYNQSSYTQWDLQPDDYEIHLFKERMFRH  
 QMAVKTNGTGRVRLPPAGFATE

**Endotoxin** < 1 EU/µg of protein (determined by LAL method)

**Purity** > 90 % by SDS-PAGE

**Applications** SDS-PAGE, Bioactivity

 Tel: 1-631-559-9269 1-516-512-3133

 Email: [info@creative-biomart.com](mailto:info@creative-biomart.com)  Fax: 1-631-938-8127

 45-1 Ramsey Road, Shirley, NY 11967, USA

<b>Storage</b>	Can be stored at +2 to +8 centigrade for 1 week. For long term storage, aliquot and store at -20 to -80 centigrade. Avoid repeated freezing and thawing cycles.
<b>Concentration</b>	0.25 mg/mL
<b>Storage Buffer</b>	PBS (pH 7.4) containing 10% glycerol

## GENE INFORMATION

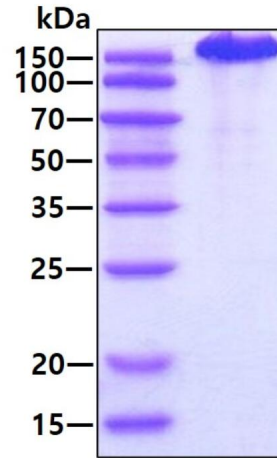
<b>Gene Name</b>	L1CAM L1 cell adhesion molecule [ Homo sapiens (human) ]
<b>Official Symbol</b>	L1CAM
<b>Synonyms</b>	L1CAM; L1 cell adhesion molecule; S10; HSAS; MASA; MIC5; SPG1; CAML1; CD171; HSAS1; N-CAML1; NCAM-L1; N-CAM-L1; neural cell adhesion molecule L1; antigen identified by monoclonal antibody R1
<b>Gene ID</b>	3897
<b>mRNA Refseq</b>	NM_001143963
<b>Protein Refseq</b>	NP_001137435
<b>MIM</b>	308840
<b>UniProt ID</b>	P32004

 Tel: 1-631-559-9269 1-516-512-3133


 Email: [info@creative-biomart.com](mailto:info@creative-biomart.com)  Fax: 1-631-938-8127

 45-1 Ramsey Road, Shirley, NY 11967, USA

**SDS-PAGE**



3  $\mu$ g by SDS-PAGE under reducing condition and visualized by coomassie blue stain

 Tel: 1-631-559-9269 1-516-512-3133

 Email: [info@creative-biomart.com](mailto:info@creative-biomart.com)  Fax: 1-631-938-8127

 45-1 Ramsey Road, Shirley, NY 11967, USA