

# Recombinant Human L1CAM Protein (Thr218-Gln423), His tagged

Cat. No. L1CAM-0830H Lot. No. (See product label)

## SPECIFICATION

<b>Product Overview</b>	Recombinant human CD171 (Thr218-Gln423) fused with His tag was expressed in E. coli.
<b>Species</b>	Human
<b>Source</b>	E.coli
<b>ProteinLength</b>	Thr218-Gln423
<b>Form</b>	Lyophilized powder/frozen liquid
<b>Molecular Mass</b>	24.2 kDa
<b>Purity</b>	>90% as determined by SDS-PAGE.
<b>Notes</b>	For research use only.
<b>Storage</b>	Use a manual defrost freezer and avoid repeated freeze thaw cycles. Store at 2 to 8 centigrade for one week. Store at -20 to -80 centigrade for twelve months from the date of receipt.
<b>Storage Buffer</b>	Supplied as solution form in PBS, pH 7.5 or lyophilized from PBS, pH 7.5.
<b>Reconstitution</b>	Reconstitute in sterile water for a stock solution.

 Tel: 1-631-559-9269 1-516-512-3133

 Email: [info@creative-biomart.com](mailto:info@creative-biomart.com)  Fax: 1-631-938-8127

 45-1 Ramsey Road, Shirley, NY 11967, USA

**Shipping** They are shipped out with dry ice/blue ice unless customers require otherwise.

## GENE INFORMATION

**Gene Name** L1CAM L1 cell adhesion molecule [ Homo sapiens (human) ]

**Official Symbol** L1CAM

**Synonyms** L1CAM; L1 cell adhesion molecule; antigen identified by monoclonal R1, HSAS, HSAS1, MASA, MIC5, S10, SPG1; neural cell adhesion molecule L1; CD171; antigen identified by monoclonal R1; S10; HSAS; MASA; MIC5; SPG1; CAML1; HSAS1; N-CAML1; NCAM-L1; N-CAM-L1;

**Gene ID** 3897

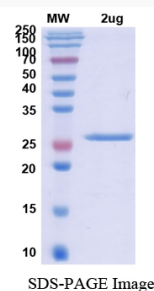
**mRNA Refseq** NM\_000425

**Protein Refseq** NP\_000416

**MIM** 308840

**UniProt ID** P32004

## SDS-PAGE



Tel: 1-631-559-9269 1-516-512-3133

Email: [info@creative-biomart.com](mailto:info@creative-biomart.com) Fax: 1-631-938-8127

45-1 Ramsey Road, Shirley, NY 11967, USA