

Recombinant Human L1CAM Protein (Ile20-Glu152), N-His tagged

Cat. No. L1CAM-0831H Lot. No. (See product label)

SPECIFICATION

Product Overview	Recombinant Human CD171/L1CAM (Ile20-Glu152) fused with the N-His tag was expressed in E. coli.
Species	Human
Source	E.coli
ProteinLength	Ile20-Glu152
Form	Lyophilized powder/frozen liquid
Molecular Mass	17.37 kDa
Purity	>90% as determined by SDS-PAGE.
Notes	For research use only.
Storage	Use a manual defrost freezer and avoid repeated freeze thaw cycles. Store at 2 to 8 centigrade for one week. Store at -20 to -80 centigrade for twelve months from the date of receipt.
Storage Buffer	0.01M PBS, pH 7.4, 0.02% NLS
Reconstitution	Reconstitute in sterile water for a stock solution.

 Tel: 1-631-559-9269 1-516-512-3133

 Email: info@creative-biomart.com  Fax: 1-631-938-8127

 45-1 Ramsey Road, Shirley, NY 11967, USA

Shipping They are shipped out with dry ice/blue ice unless customers require otherwise.

GENE INFORMATION

Gene Name [L1CAM L1 cell adhesion molecule \[Homo sapiens \(human\) \]](#)

Official Symbol [L1CAM](#)

Synonyms L1CAM; L1 cell adhesion molecule; antigen identified by monoclonal R1, HSAS, HSAS1, MASA, MIC5, S10, SPG1; neural cell adhesion molecule L1; CD171; antigen identified by monoclonal R1; S10; HSAS; MASA; MIC5; SPG1; CAML1; HSAS1; N-CAML1; NCAM-L1; N-CAM-L1;

Gene ID [3897](#)

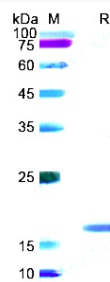
mRNA Refseq [NM_000425](#)

Protein Refseq [NP_000416](#)

MIM [308840](#)

UniProt ID [P32004](#)

SDS-PAGE



 Tel: 1-631-559-9269 1-516-512-3133

 Email: info@creative-biomart.com  Fax: 1-631-938-8127

 45-1 Ramsey Road, Shirley, NY 11967, USA