

Recombinant Human L1CAM Protein, His-tagged

Cat. No. L1CAM-0832H Lot. No. (See product label)

SPECIFICATION

Product Overview	Recombinant Human L1CAM Protein(Ser526~Thr690), fused with N-terminal His tag, was expressed in E. coli.
Species	Human
Source	E.coli
ProteinLength	Ser526~Thr690
Tag	N-His
Form	20mM Tris, 150mM NaCl, pH8.0, containing 0.01% SKL, 5% Trehalose.
Molecular Mass	20.0kDa
Endotoxin	<1.0EU per 1µg (determined by the LAL method)
Purity	> 90%
Storage	Avoid repeated freeze/thaw cycles. Store at 2-8°C for one month. Aliquot and store at -80°C for 12 months.
Reconstitution	Reconstitute in 20mM Tris, 150mM NaCl (pH8.0) to a concentration of 0.1-1.0 mg/mL. Do not vortex.

 Tel: 1-631-559-9269 1-516-512-3133

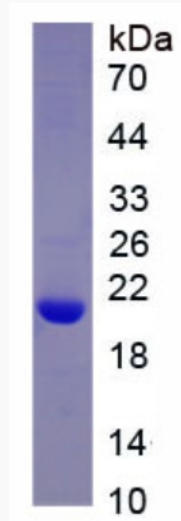
 Email: info@creative-biomart.com  Fax: 1-631-938-8127

 45-1 Ramsey Road, Shirley, NY 11967, USA

GENE INFORMATION**Gene Name** L1CAM L1 cell adhesion molecule [Homo sapiens]**Official Symbol** L1CAM**Synonyms** L1CAM; L1 cell adhesion molecule; antigen identified by monoclonal R1 , HSAS, HSAS1, MASA, MIC5, S10, SPG1; neural cell adhesion molecule L1; CD171; antigen identified by monoclonal R1; S10; HSAS; MASA; MIC5; SPG1; CAML1; HSAS1; N-CAML1; NCAM-L1; N-CAM-L1;**Gene ID** 3897**mRNA Refseq** NM_000425**Protein Refseq** NP_000416**MIM** 308840**UniProt ID** P32004 Tel: 1-631-559-9269 1-516-512-3133 Email: info@creative-biomart.com  Fax: 1-631-938-8127 45-1 Ramsey Road, Shirley, NY 11967, USA



SDS-PAGE



Tel: 1-631-559-9269 1-516-512-3133

Email: info@creative-biomart.com Fax: 1-631-938-8127

45-1 Ramsey Road, Shirley, NY 11967, USA