

## Active Recombinant Human L1CAM protein, His-tagged

Cat. No. L1CAM-3144H Lot. No. (See product label)

### SPECIFICATION

<b>Product Overview</b>	Active Recombinant Human L1CAM protein(P32004-1)(Ile20-Glu1120) is expressed from HEK293 with His tag at the C-terminus.
<b>Species</b>	Human
<b>Source</b>	HEK293
<b>ProteinLength</b>	20-1120 aa
<b>Form</b>	Lyophilized from 0.22µm filtered solution in PBS (pH 7.4).
<b>Bio-activity</b>	Immobilized Human L1CAM, His Tag at 0.2µg/ml (100µl/well) on the plate. Dose response curve for Anti-L1CAM Antibody, hFc Tag with the EC50 of 3.7ng/ml determined by ELISA.
<b>Molecular Mass</b>	The protein has a predicted MW of 124.6 kDa. Due to glycosylation, the protein migrates to 150-180 kDa based on Bis-Tris PAGE result.
<b>Endotoxin</b>	Less than 1 EU per µg by the LAL method.
<b>Purity</b>	> 95% as determined by Bis-Tris PAGE > 95% as determined by HPLC
<b>Storage</b>	-20 to -80°C for 12 months as supplied from date of receipt. -80°C for 3 months after reconstitution. Recommend to aliquot the protein into smaller quantities for optimal storage. Please minimize freeze-thaw cycles.

 Tel: 1-631-559-9269 1-516-512-3133

 Email: [info@creative-biomart.com](mailto:info@creative-biomart.com)  Fax: 1-631-938-8127

 45-1 Ramsey Road, Shirley, NY 11967, USA

**Reconstitution** Dissolve the lyophilized protein in distilled water.

## GENE INFORMATION

**Gene Name** [L1CAM L1 cell adhesion molecule \[ Homo sapiens \]](#)

**Official Symbol** [L1CAM](#)

**Synonyms** L1CAM; L1 cell adhesion molecule; antigen identified by monoclonal R1, HSAS, HSAS1, MASA, MIC5, S10, SPG1; neural cell adhesion molecule L1; CD171; antigen identified by monoclonal R1; S10; HSAS; MASA; MIC5; SPG1; CAML1; HSAS1; N-CAML1; NCAM-L1; N-CAM-L1;

**Gene ID** [3897](#)

**mRNA Refseq** [NM\\_000425](#)

**Protein Refseq** [NP\\_000416](#)

**MIM** [308840](#)

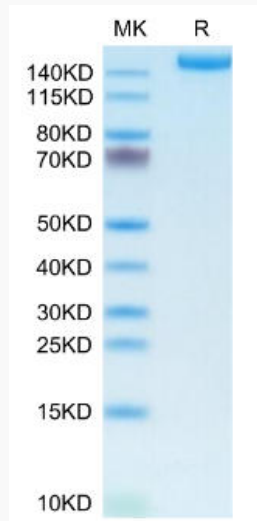
**UniProt ID** [P32004](#)

 Tel: 1-631-559-9269 1-516-512-3133

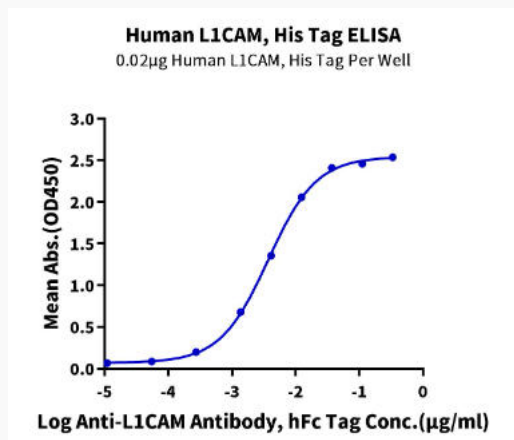
 Email: [info@creative-biomart.com](mailto:info@creative-biomart.com)  Fax: 1-631-938-8127

 45-1 Ramsey Road, Shirley, NY 11967, USA

**Bis-Tris PAGE**



**ELISA Data**



 Tel: 1-631-559-9269 1-516-512-3133

 Email: [info@creative-biomart.com](mailto:info@creative-biomart.com)  Fax: 1-631-938-8127

 45-1 Ramsey Road, Shirley, NY 11967, USA