

## Recombinant Human L1CAM Protein, His&Myc-tagged

Cat. No. L1CAM-4399H Lot. No. (See product label)

### SPECIFICATION

<b>Product Overview</b>	Recombinant Human L1CAM Protein(P32004)(20-1120aa), fused with N-terminal His tag and C-terminal Myc tag, was expressed in HEK293.
<b>Species</b>	Human
<b>Source</b>	HEK293
<b>ProteinLength</b>	20-1120aa
<b>Form</b>	Lyophilized from a 0.2 µm filtered 20 mM Tris-HCl, 0.5 M NaCl, 6% Trehalose, pH 8.0.
<b>Storage</b>	Store at -20°C/-80°C upon receipt, aliquoting is necessary for mutiple use. Avoid repeated freeze-thaw cycles.
<b>Bio-activity</b>	Measured by its binding ability in a functional ELISA. Immobilized L1CAM at 2 µg/ml can bind Anti-L1CAM Rabbit Monoclonal Antibody, the EC50 is 5.384-9.380 ng/ml.
<b>Molecular Mass</b>	128.2 kDa
<b>Endotoxin</b>	Less than 1.0 EU/ug as determined by LAL method.
<b>Purity</b>	Greater than 95% as determined by SDS-PAGE.

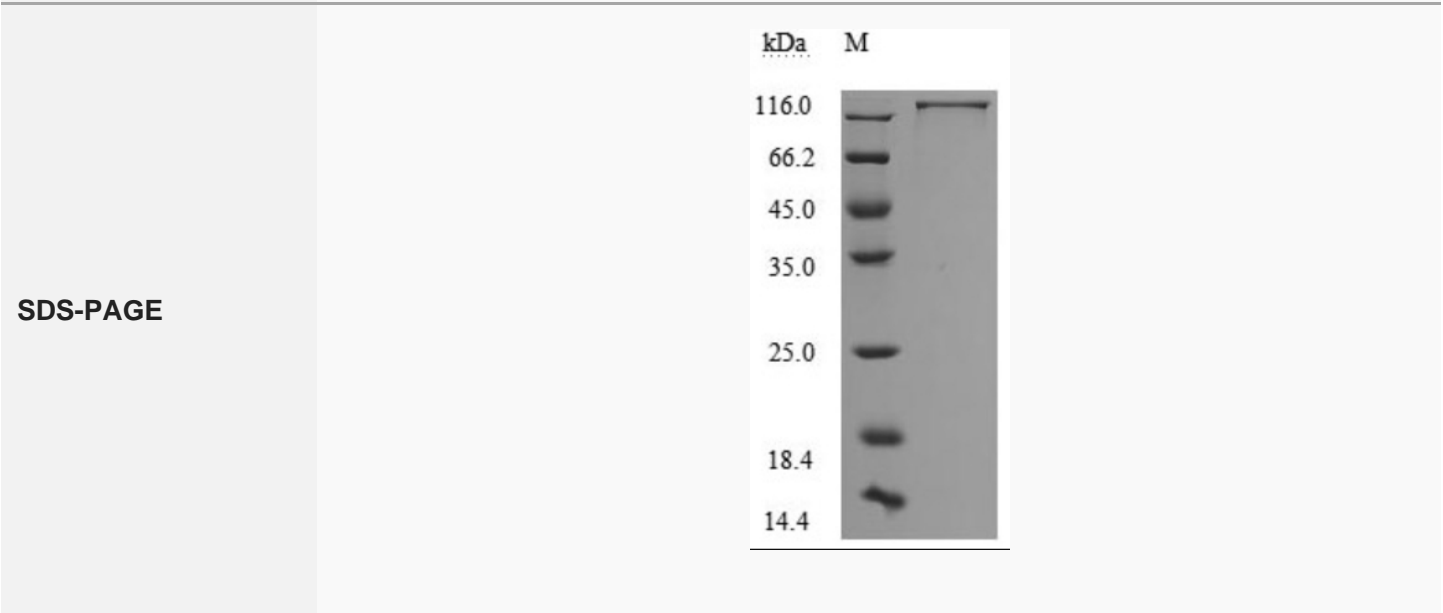
### GENE INFORMATION

 Tel: 1-631-559-9269 1-516-512-3133

 Email: [info@creative-biomart.com](mailto:info@creative-biomart.com)  Fax: 1-631-938-8127

 45-1 Ramsey Road, Shirley, NY 11967, USA

<b>Official Symbol</b>	L1CAM
<b>Synonyms</b>	L1CAM; L1 cell adhesion molecule; antigen identified by monoclonal R1 , HSAS, HSAS1, MASA, MIC5, S10, SPG1; neural cell adhesion molecule L1; CD171; antigen identified by monoclonal R1; S10; HSAS; MASA; MIC5; SPG1; CAML1; HSAS1; N-CAML1; NCAM-L1; N-CAM-L1;
<b>Gene ID</b>	3897
<b>mRNA Refseq</b>	NM_000425
<b>Protein Refseq</b>	NP_000416
<b>MIM</b>	308840
<b>UniProt ID</b>	P32004



Tel: 1-631-559-9269 1-516-512-3133

Email: [info@creative-biomart.com](mailto:info@creative-biomart.com) Fax: 1-631-938-8127

45-1 Ramsey Road, Shirley, NY 11967, USA