

Recombinant Full Length Human L1CAM Protein, C-Flag-tagged

Cat. No. L1CAM-553HFL **Lot. No.** (See product label)

SPECIFICATION

Product Overview	Recombinant Full Length Human L1CAM Protein, fused to Flag-tag at C-terminus, was expressed in Mammalian cells.
Species	Human
Source	Mammalian Cells
Description	The protein encoded by this gene is an axonal glycoprotein belonging to the immunoglobulin supergene family. The ectodomain, consisting of several immunoglobulin-like domains and fibronectin-like repeats (type III), is linked via a single transmembrane sequence to a conserved cytoplasmic domain. This cell adhesion molecule plays an important role in nervous system development, including neuronal migration and differentiation. Mutations in the gene cause X-linked neurological syndromes known as CRASH (corpus callosum hypoplasia, retardation, aphasia, spastic paraplegia and hydrocephalus). Alternative splicing of this gene results in multiple transcript variants, some of which include an alternate exon that is considered to be specific to neurons.
Form	25 mM Tris HCl, pH 7.3, 100 mM glycine, 10% glycerol.
Molecular Mass	137.8 kDa
AA Sequence	MVVALRYVWPLLLCSPCLLIQIPEEYEGHHVMEPPVITEQSPRRLVVFPTDDISLKCE ASGKPEVQFRWT RDGVHFKPKEELGVTVYQSPHSGSFTITGNNSNFAQRFQGIYR

 Tel: 1-631-559-9269 1-516-512-3133

 Email: info@creative-biomart.com  Fax: 1-631-938-8127

 45-1 Ramsey Road, Shirley, NY 11967, USA

CFASNKLGTAMSHEIRLMAEGAPKWPK ETVKPVEVEEGESVVLPCNPPPSAEPLRI
 YWMNSKILHIKQDERVTMGQNGNLYFANVLTSDNHSYICH AHFPGTRTIIQKEPIDL
 RVKATNSMIDRKPRLLFPTNSSSHLVALQGQPLVLECIAEGFPTPTIKWLRPS GPMP
 ADRVTYQNHKTLQLLKVGEEDDGEYRCLAENSLGSARHAYYVTVEAAPYWLHKP
 QSHLYGPGETA RLDCQVQGRPQPEVTWRINGIPVEELAKDQKYRIQRGALILSNVQ
 PSDTMVTQCEARNRHGLLLANAYIY VVQLPAKILTADNQTYMAVQGSTAYLLCKAF
 GAPVPSVQWLDEDGTTVLQDERFFPYANGTLGIRDLQAN DTGRYFCLAANDQNNV
 TIMANLKVKDATQITQGPRSTIEKKGSRVFTFCQASFDPSLQPSITWRGDGRDL QEL
 GDSKYFIEDGRLVIHSLDYSDQGNYSVASTELDVVESRAQLLVGSPGPVPRVLV
 SDLHLLTQSQ VRVSWSPAEDHNAPIEKYDIEFEDKEMAPEKWYSLGKVPGNQTSTT
 LKLSPYVHYTFRVTAINKYGPGE SPVSETVVTPEAAPEKNPVDVKGEGNETTMVI
 TWKPLRWMDWNAPQVQYRVQWRPQGTRGPWQEIVSD PFLVVSNTSTFVPYEIK
 VQAVNSQGGKPEPQVTIGYSGEDYPQAIPELEGIEILNSSAVLVKWRPVDLAQ VKG
 HLRGYNVTYWREGSQRKHSKRHIHKDHVVVPANTTSVILSGLRPYSSYHLEVQAFN
 GRGSGPASEFT FSTPEGVPGHPEALHLECQSNTSLLLWQPPLSHNGVLTGYVLS
 YHPLDEGGKQLSFNLRDPELRTHNL TDLSPHLRYRFQLQATTKEGPGGEAIVREGG
 TMALSGISDFGNISATAGENYSVVSWVPKEGQCNRFHIL FKALGEEKGGASLSPQ
 YVSYNQSSYTQWDLQPDTDYEIHLFKERMFRHQMAVKTNGTGRVRLPPAGFATE G
 WFIGFVSAIILLLLVLILCFIKRSKGGKYSVKDKEDTQVDSEARPMKDETFGEYRSLE
 SDNEEKAFGS SQPSLNGDIKPLGSDDSLADYGGSDVDVQFNEDGSFIGQYSGKKEK
 EAAGGNDSSGATSPINPAVALETRTRPLEQKLISEEDLAANDILDYKDDDDKV

Purity > 80% as determined by SDS-PAGE and Coomassie blue staining.


Stability Stable for 12 months from the date of receipt of the product under proper storage and handling conditions. Avoid repeated freeze-thaw cycles.

Storage Store at -80 centigrade.

Concentration >50 ug/mL as determined by microplate BCA method.

 Tel: 1-631-559-9269 1-516-512-3133

 Email: info@creative-biomart.com  Fax: 1-631-938-8127

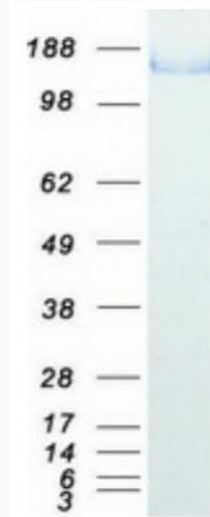
 45-1 Ramsey Road, Shirley, NY 11967, USA

Preparation	Recombinant protein was captured through anti-DDK affinity column followed by conventional chromatography steps.
Protein Families	Druggable Genome, ES Cell Differentiation/IPS, Transmembrane
Protein Pathways	Axon guidance, Cell adhesion molecules (CAMs)
Full Length	Full L.
GENE INFORMATION	
Gene Name	L1CAM L1 cell adhesion molecule [Homo sapiens (human)]
Official Symbol	L1CAM
Synonyms	S10; HSAS; MASA; MIC5; SPG1; CAML1; CD171; HSAS1; N-CAML1; NCAM-L1; N-CAM-L1
Gene ID	3897
mRNA Refseq	NM_000425.5
Protein Refseq	NP_000416.1
MIM	308840
UniProt ID	P32004

 Tel: 1-631-559-9269 1-516-512-3133

 Email: info@creative-biomart.com  Fax: 1-631-938-8127

 45-1 Ramsey Road, Shirley, NY 11967, USA



Coomassie blue staining of purified L1CAM protein.

 Tel: 1-631-559-9269 1-516-512-3133

 Email: info@creative-biomart.com  Fax: 1-631-938-8127

 45-1 Ramsey Road, Shirley, NY 11967, USA