

Recombinant Mouse L1cam protein, His & GST-tagged

Cat. No. L1cam-5671M Lot. No. (See product label)

SPECIFICATION

Product Overview	Recombinant Mouse L1cam aa. (Ser882~Ala1132 (Accession # P11627)) fused with N-terminal His & GST tag was produced in E. coli cells.
Species	Mouse
Source	E.coli
ProteinLength	Ser882~Ala1132
Form	Freeze-dried powder
Molecular Mass	Predicted Molecular Mass: 59.9kDa
Endotoxin	<1.0EU per 1g (determined by the LAL method)
Purity	>95%
Characteristic	The isoelectric point is 6.1.
Applications	SDS-PAGE; WB; ELISA; IP.
Stability	The thermal stability is described by the loss rate. The loss rate was determined by accelerated thermal degradation test, that is, incubate the protein at 37°C for 48h, and no obvious degradation and precipitation were observed. The loss rate is less than 5% within the expiration date under appropriate storage condition.

 Tel: 1-631-559-9269 1-516-512-3133

 Email: info@creative-biomart.com  Fax: 1-631-938-8127

 45-1 Ramsey Road, Shirley, NY 11967, USA

Storage	Avoid repeated freeze/thaw cycles. Store at 2-8°C for one month. Aliquot and store at -80°C for 12 months.
Storage buffer	Supplied as lyophilized form in PBS, pH7.4, containing 5% sucrose, 0.01% sarcosyl.
Reconstitution	Reconstitute in sterile PBS, pH7.2-pH7.4.

GENE INFORMATION

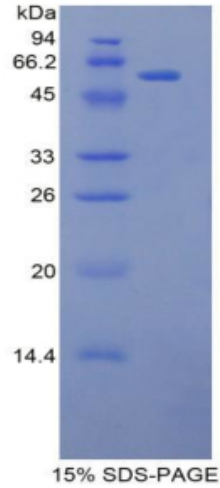
Gene Name	L1cam L1 cell adhesion molecule [<i>Mus musculus</i> (house mouse)]
Official Symbol	L1cam
Synonyms	L1cam; L1 cell adhesion molecule; L1; CD171; NCAM-L1; N-CAM-L1; neural cell adhesion molecule L1
Gene ID	16728
mRNA Refseq	NM_008478.3
Protein Refseq	NP_032504.3
UniProt ID	P11627

 Tel: 1-631-559-9269 1-516-512-3133

 Email: info@creative-biomart.com  Fax: 1-631-938-8127

 45-1 Ramsey Road, Shirley, NY 11967, USA

SDS-PAGE



 Tel: 1-631-559-9269 1-516-512-3133

 Email: info@creative-biomart.com  Fax: 1-631-938-8127

 45-1 Ramsey Road, Shirley, NY 11967, USA