

## Recombinant HPV-16 L2 Protein, His-tagged

Cat. No. L2-1727H Lot. No. (See product label)

### SPECIFICATION

<b>Product Overview</b>	Recombinant HPV-16 L2 protein with a His-tag was expressed in E. coli
<b>Species</b>	HPV16
<b>Source</b>	E.coli
<b>Description</b>	HPV is a common sexually transmitted infection which usually shows no symptoms and goes away by itself, but can sometimes cause serious illness.
<b>Molecular Mass</b>	The protein has a calculated MW of 51 kDa.
<b>AA Sequence</b>	MRHKRS AKRTKRASATQLYKTCQAGTCPPDIIPKVEGKTIADQILQYGSMGVFFGG LGIGTGSGTGGRTGYIPLGTRPPTATDTLAPVRPPLTVDPVGPSPSIVSLVEETSI DAGAPTSVPSIPPDVSGFSITTSTDTTPAILDINNTVTTVTTHNNPTFTDPSVLQPPTP AETGGHFTLSSSTISTHNYEEIPMDTFIVSTNPNTVTSSSTPIGSRPVARLGLYSRTTQ QVKVVDPAFVTTPTKLITYDNPAYEGIDVDNTLYFSSNDNSINIAPDPDFLDIVALHRP ALTSRRTGIRYSRIGNKQTLRTRSGKSIGAKVHYYYDLSTIDPAEEIELQTITPSTYTTT SHAASPTSINNGLYDIYADDFITDTSTTPVPSVPSTSLSGYIPANTTIPFGGAYNIPLVS GPDIPINITDQAPSLIPIVPGSPQYTIADAGDFYLHPSYYMLRKRKRLPYFFSDVSLA AHHHHHH
<b>Purity</b>	>95% by SDS-PAGE
<b>Storage</b>	Store it under sterile conditions at -20 to -80 centigrade. It is recommended that the protein be aliquoted for optimal storage. Avoid repeated freeze-thaw cycles.

Tel: 1-631-559-9269 1-516-512-3133

Email: [info@creative-biomart.com](mailto:info@creative-biomart.com) Fax: 1-631-938-8127

45-1 Ramsey Road, Shirley, NY 11967, USA

**Concentration** 0.32 mg/mL

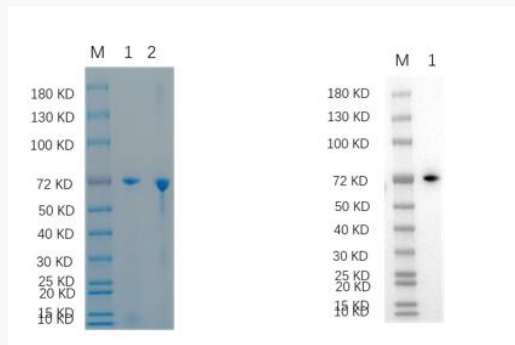
**Storage Buffer** PBS pH7.4, 0.5% SKL

## GENE INFORMATION

**Official Symbol** L2

**Synonyms** L2

### SDS-PAGE:



Reducing 12% SDS-PAGE and WB analysis profile of purified L2

1. L2
2. BSA

 Tel: 1-631-559-9269 1-516-512-3133

 Email: [info@creative-biomart.com](mailto:info@creative-biomart.com)  Fax: 1-631-938-8127

 45-1 Ramsey Road, Shirley, NY 11967, USA