

Recombinant Human L3MBTL1 protein, His-tagged

Cat. No. L3MBTL1-5743H Lot. No. (See product label)

SPECIFICATION

Product Overview	Recombinant Human L3MBTL1 protein(420-772 aa), fused with N-terminal His tag, was expressed in E.coli.
Species	Human
Source	E.coli
ProteinLength	420-772 aa
Form	The purified protein was lyophilized from sterile phosphate-buffered saline (PBS: 58 mM Na ₂ HPO ₄ , 17 mM NaH ₂ PO ₄ , 68 mM NaCl, pH 7.4). Prior to lyophilization, 5% (w/v) trehalose and 5% (w/v) mannitol were incorporated as cryoprotective excipients. The protein was eluted with a buffer containing 300 mM imidazole.
AASequence	DNFCWEKYLEETGASAVPTWAFKVRPPHSFLVNMKLEAVDRRNPALIRVASVEDVE DHRIKIHFDGWSHGDFWIDADHPDIHPAGWCSKTGHPLQPPLGPREPSSASPGGC PPLSYRSLPHTRTSKYSFHHRKCPTPGCDGSGHVTGKFTAHHCLSGCPLAERNQS RLKAELSDSEASARKKNLSGFSRKKPRHHGRIGRPPKYRKIPQEDFQTLTPDVVHQ SLFMSALSAHPDRSLSVCWEQHCLLPGVAGISASTVAKWTIDEVFGFVQTLTGCE DQARLFKDEARIVRVTHVSGKTLVWTVVAQLGDLVCSDDLQEGKGILETGVHSLLCSL PTHLLAKLSFASDSQY
Purity	85%, by SDS-PAGE with Coomassie Brilliant Blue staining.
Storage	Store at 2-8°C for 1-2 weeks. Aliquot and store at -20°C to -80°C for up to 3 months,

 Tel: 1-631-559-9269 1-516-512-3133

 Email: info@creative-biomart.com  Fax: 1-631-938-8127

 45-1 Ramsey Road, Shirley, NY 11967, USA

reconstitution with sterile water and addition of an equal volume of glycerol. Avoid repeat freeze-thaw cycles.

Reconstitution

Dissolve the product in 200 µl sterile water to achieve a working concentration of 0.25 g/µl. If experimental compatibility allows, mix the aqueous solution with an equal volume of glycerol (1:1 ratio) after initial reconstitution.

GENE INFORMATION

Gene Name [L3MBTL1 I\(3\)mbt-like 1 \(Drosophila\) \[Homo sapiens \]](#)

Official Symbol [L3MBTL1](#)

Synonyms

L3MBTL1; I(3)mbt-like 1 (Drosophila); I(3)mbt (Drosophila) like , I(3)mbt like (Drosophila) , L3MBTL; lethal(3)malignant brain tumor-like protein 1; dJ138B7.3; DKFZp586P1522; KIAA0681; lethal (3) malignant brain tumor I(3); I(3)mbt protein homolog; L3MBTL; H-L(3)MBT; FLJ41181;

Gene ID [26013](#)

mRNA Refseq [NM_015478](#)

Protein Refseq [NP_056293](#)

MIM [608802](#)

UniProt ID [Q9Y468](#)

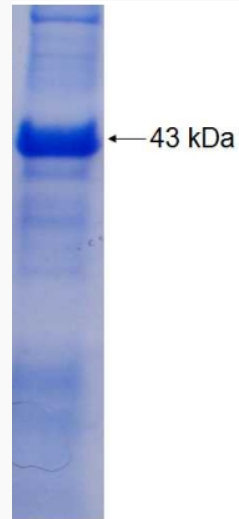
 Tel: 1-631-559-9269 1-516-512-3133

 Email: info@creative-biomart.com  Fax: 1-631-938-8127

 45-1 Ramsey Road, Shirley, NY 11967, USA



SDS-PAGE



Tel: 1-631-559-9269 1-516-512-3133

Email: info@creative-biomart.com Fax: 1-631-938-8127

45-1 Ramsey Road, Shirley, NY 11967, USA