

## Recombinant Human LACTB2 protein, GST-tagged

Cat. No. LACTB2-4815H Lot. No. (See product label)

### SPECIFICATION

<b>Product Overview</b>	Recombinant Human LACTB2 protein(1-288 aa), fused with N-terminal GST tag, was expressed in E.coli.
<b>Species</b>	Human
<b>Source</b>	E.coli
<b>ProteinLength</b>	1-288 aa
<b>Form</b>	The purified protein was lyophilized from sterile phosphate-buffered saline (PBS: 58 mM Na <sub>2</sub> HPO <sub>4</sub> , 17 mM NaH <sub>2</sub> PO <sub>4</sub> , 68 mM NaCl, pH 8.0). Prior to lyophilization, 5% (w/v) trehalose and 5% (w/v) mannitol were incorporated as cryoprotective excipients. The protein was eluted with a buffer containing 100 mM reduced glutathione (GSH).
<b>AASequence</b>	MAAVLQRVERLSNRVVRVLGCNPGPMTLQGTNTYLVGTGPRRILIDTGEPAlPEYIS CLKQALTEFNtAIQEIVVTHWHRDHSGGIGDICKSINNDTTYCIKKLPRNPQREEIIGN GEQQYVYLKDGdVIKTEGATLRVLYTPGHTDDHMALLEEENAIFSGDCILGEGTTVF EDLYDYMNSLkELLKIKADIIYPGHGPVIHNAEAKIQQYISHRNIREQQILTLFRENFEK SFTVMELVKIYKNTPENLHEMAKHNLLLHLKKLEKEGKIFSNTDPDKKWAHL
<b>Purity</b>	85%, by SDS-PAGE with Coomassie Brilliant Blue staining.
<b>Storage</b>	Store at 2-8°C for 1-2 weeks. Aliquot and store at -20°C to -80°C for up to 3 months, reconstitution with sterile water and addition of an equal volume of glycerol. Avoid

 Tel: 1-631-559-9269 1-516-512-3133

 Email: [info@creative-biomart.com](mailto:info@creative-biomart.com)  Fax: 1-631-938-8127

 45-1 Ramsey Road, Shirley, NY 11967, USA

repeat freeze-thaw cycles.

**Reconstitution**

Dissolve the product in 200 µl sterile water to achieve a working concentration of 0.25 g/µl. If experimental compatibility allows, mix the aqueous solution with an equal volume of glycerol (1:1 ratio) after initial reconstitution.

**GENE INFORMATION**

**Gene Name** [LACTB2 lactamase, beta 2 \[ Homo sapiens \]](#)

**Official Symbol** [LACTB2](#)

**Synonyms** CGI-83

**Gene ID** [51110](#)

**mRNA Refseq** [NM\\_016027.2](#)

**Protein Refseq** [NP\\_057111.1](#)

**UniProt ID** [Q53H82](#)

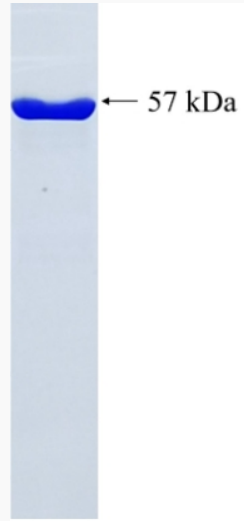
 Tel: 1-631-559-9269 1-516-512-3133

 Email: [info@creative-biomart.com](mailto:info@creative-biomart.com)  Fax: 1-631-938-8127

 45-1 Ramsey Road, Shirley, NY 11967, USA



SDS-PAGE



☎ Tel: 1-631-559-9269 1-516-512-3133

☎ Email: [info@creative-biomart.com](mailto:info@creative-biomart.com) ☎ Fax: 1-631-938-8127

☎ 45-1 Ramsey Road, Shirley, NY 11967, USA