

## Active Recombinant Cynomolgus LAG3 protein, Fc-tagged

**Cat. No.** LAG3-1829C    **Lot. No.** (See product label)

### SPECIFICATION

<b>Product Overview</b>	Cynomolgus LAG-3 / CD223, Fc Tag is expressed from human 293 cells (HEK293). It contains AA Ala 18 - His 449 (Accession # XP_005570011.1).
<b>Species</b>	Cynomolgus
<b>Source</b>	HEK293
<b>ProteinLength</b>	AA Ala 18 - His 449
<b>Description</b>	Lymphocyte activation gene 3 protein (LAG3) is also known as CD antigen CD223 and protein FDC, which belongs to immunoglobulin (Ig) superfamily and contains 4 extracellular Ig-like domains. The LAG3 gene contains 8 exons. The sequence data, exon/intron organization, and chromosomal localization all indicate a close relationship of LAG3 to CD4. LAG3 /CD223 involved in lymphocyte activation. LAG3 /CD223 binds to HLA class-II antigens.
<b>Predicted N Terminal</b>	Ala 18
<b>Form</b>	Lyophilized from 0.22 µm filtered solution in 50 mM Tris, 100 mM Glycine, pH7.5, 10% trehalose.
<b>Bio-activity</b>	Immobilized Cynomolgus LAG-3, Fc Tag at 2 µg/mL (100 µL/well) can bind Anti-LAG3 MAb, Human IgG1 with a linear range of 1-51 ng/mL.
<b>Molecular Mass</b>	This protein carries a human IgG1 Fc tag at the C-terminus. The protein has a

 Tel: 1-631-559-9269    1-516-512-3133

 Email: [info@creative-biomart.com](mailto:info@creative-biomart.com)     Fax: 1-631-938-8127

 45-1 Ramsey Road, Shirley, NY 11967, USA

	calculated MW of 73.2 kDa. The protein migrates as 90-100 kDa under reducing (R) condition (SDS-PAGE) due to glycosylation.
<b>Endotoxin</b>	Less than 1.0 EU per µg by the LAL method.
<b>Purity</b>	>80% as determined by SDS-PAGE.
<b>Storage</b>	For long term storage, the product should be stored at lyophilized state at -20°C or lower. Please avoid repeated freeze-thaw cycles. No activity loss is observed after storage at: 4-8°C for 12 months in lyophilized state; -70°C for 3 months under sterile conditions after reconstitution.
<b>Reconstitution</b>	It is recommended that sterile water be added to the vial to prepare a stock solution of 0.2 ug/ul. Centrifuge the vial at 4°C before opening to recover the entire contents.

## GENE INFORMATION

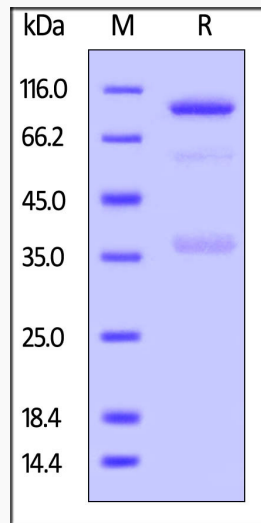
<b>Gene Name</b>	LAG3 lymphocyte activating 3 [ <i>Macaca fascicularis</i> (crab-eating macaque) ]
<b>Official Symbol</b>	LAG3
<b>Synonyms</b>	CD223; lymphocyte-activation gene 3
<b>Gene ID</b>	102122272
<b>mRNA Refseq</b>	XM_005569954.2
<b>Protein Refseq</b>	XP_005570011.1

 Tel: 1-631-559-9269 1-516-512-3133

 Email: [info@creative-biomart.com](mailto:info@creative-biomart.com)  Fax: 1-631-938-8127

 45-1 Ramsey Road, Shirley, NY 11967, USA

## SDS-PAGE



Cynomolgus LAG-3 / CD223, Fc Tag on SDS-PAGE under reducing (R) condition.  
The gel was stained overnight with Coomassie Blue. The purity of the protein is greater than 80%.

Tel: 1-631-559-9269 1-516-512-3133

Email: [info@creative-biomart.com](mailto:info@creative-biomart.com) Fax: 1-631-938-8127

45-1 Ramsey Road, Shirley, NY 11967, USA