

## Recombinant Human LAG3 Protein (ECD), His-tagged(C-ter)

Cat. No. LAG3-225H Lot. No. (See product label)

### SPECIFICATION

<b>Product Overview</b>	Recombinant Human LAG3 Protein (ECD) with His tag (C-ter) was expressed in HEK293.
<b>Species</b>	Human
<b>Source</b>	HEK293
<b>ProteinLength</b>	Leu23-Leu450
<b>Description</b>	Lymphocyte-activation protein 3 belongs to Ig superfamily and contains 4 extracellular Ig-like domains. The LAG3 gene contains 8 exons. The sequence data, exon/intron organization, and chromosomal localization all indicate a close relationship of LAG3 to CD4. [provided by RefSeq, Jul 2008]
<b>Form</b>	Powder
<b>Endotoxin</b>	Endotoxin level is less than 0.1 EU/μg of the protein, as determined by the LAL test.
<b>Purity</b>	> 95% (by SDS-PAGE)
<b>Applications</b>	Binding, ELISA, SDS-PAGE
<b>Notes</b>	For laboratory research only, not for drug, diagnostic or other use.
<b>Storage</b>	Lyophilized protein should be stored at -20°C or -80°C. After reconstitution, aliquot

 Tel: 1-631-559-9269 1-516-512-3133

 Email: [info@creative-biomart.com](mailto:info@creative-biomart.com)  Fax: 1-631-938-8127

 45-1 Ramsey Road, Shirley, NY 11967, USA

and store at -20°C for up to one month, at 2-8°C for up to one week. Storage in frost free freezers is not recommended. Avoid repeated freeze/thaw cycles. Suggest spin the vial prior to opening.

**Storage Buffer**                      PBS (pH 7.4)

**Reconstitution**                      Reconstitute to a concentration of 0.1-0.5 mg/ml in sterile distilled water.

## GENE INFORMATION

**Gene Name**                              LAG3 lymphocyte-activation gene 3 [ Homo sapiens ]

**Official Symbol**                        LAG3

**Synonyms**                                LAG3; lymphocyte-activation gene 3; lymphocyte activation gene 3 protein; CD223;

**Gene ID**                                    3902

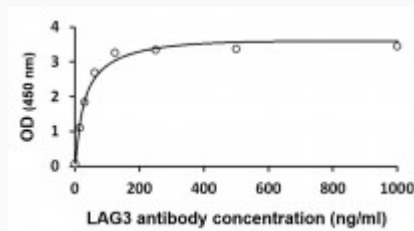
**mRNA Refseq**                            NM\_002286

**Protein Refseq**                          NP\_002277

**MIM**                                        153337

**UniProt ID**                                P18627

## ELISA

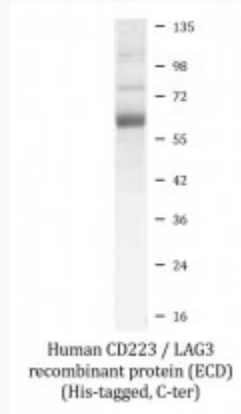


 Tel: 1-631-559-9269    1-516-512-3133

 Email: [info@creative-biomart.com](mailto:info@creative-biomart.com)     Fax: 1-631-938-8127

 45-1 Ramsey Road, Shirley, NY 11967, USA

**SDS-PAGE**



 Tel: 1-631-559-9269 1-516-512-3133

 Email: [info@creative-biomart.com](mailto:info@creative-biomart.com)  Fax: 1-631-938-8127

 45-1 Ramsey Road, Shirley, NY 11967, USA