

Active Recombinant Human LAG3 Protein, LIgG2b Fc-tagged, low endotoxin

Cat. No. LAG3-382H **Lot. No.** (See product label)

SPECIFICATION

Product Overview	Recombinant Human LAG3 Protein, LIgG2b Fc-tagged, low endotoxin is expressed from human 293 cells (HEK293). It contains AA Leu 23 - Leu 450 (Accession # P18627-1). Predicted N-terminus: Leu 23. This protein carries a llama IgG2b Fc tag at the C-terminus. The protein has a calculated MW of 74.0 kDa. The protein migrates as 90 KDa under reducing (R) condition (SDS-PAGE) due to glycosylation.
Species	Human
Source	HEK293
ProteinLength	Leu 23 - Leu 450
Form	Lyophilized from 0.22 µm filtered solution in 50 mM Tris, 100 mM Glycine, 25 mM Arg, 150 mM NaCl, pH7.5. Normally trehalose is added as protectant before lyophilization.
Bio-activity	Recombinant Human LAG3 Protein, LIgG2b Fc-tagged, low endotoxin at 2 µg/mL (100 µL/well) can bind Anti-Human LAG3 MAb with a linear range of 0.2-4 ng/mL (QC tested).
Molecular Mass	74.0 kDa
Endotoxin	Less than 0.01 EU per µg by the LAL method.

 Tel: 1-631-559-9269 1-516-512-3133

 Email: info@creative-biomart.com  Fax: 1-631-938-8127

 45-1 Ramsey Road, Shirley, NY 11967, USA

Purity	>95% as determined by SDS-PAGE.
Notes	Please avoid repeated freeze-thaw cycles.
Stability	No activity loss is observed after storage at: 4-8 centigrade for 12 months in lyophilized state; -70 centigrade for 3 months under sterile conditions after reconstitution.
Storage	For long term storage, the product should be stored at lyophilized state at -20 centigrade or lower.
Reconstitution	It is recommended that sterile water be added to the vial to prepare a stock solution of 0.2 mg/ml. Centrifuge the vial at 4 centigrade before opening to recover the entire contents.

GENE INFORMATION

Gene Name	LAG3 lymphocyte-activation gene 3 [Homo sapiens]
Official Symbol	LAG3
Synonyms	LAG3; lymphocyte-activation gene 3; lymphocyte activation gene 3 protein; CD223;
Gene ID	3902
mRNA Refseq	NM_002286
Protein Refseq	NP_002277
MIM	153337

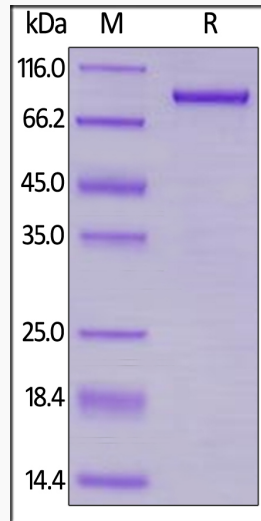
 Tel: 1-631-559-9269 1-516-512-3133

 Email: info@creative-biomart.com  Fax: 1-631-938-8127

 45-1 Ramsey Road, Shirley, NY 11967, USA

UniProt ID

P18627



 Tel: 1-631-559-9269 1-516-512-3133

 Email: info@creative-biomart.com  Fax: 1-631-938-8127

 45-1 Ramsey Road, Shirley, NY 11967, USA