

# Active Recombinant Human LAG3 Protein, MIgG2a Fc & Avi-tagged, Biotinylated

Cat. No. LAG3-385H    Lot. No. (See product label)

## SPECIFICATION

<b>Product Overview</b>	Recombinant Human LAG3 Protein, MIgG2a Fc & Avi-tagged, Biotinylated is expressed from human 293 cells (HEK293). It contains AA Leu 23 - Leu 450 (Accession # P18627-1). Predicted N-terminus: Leu 23. This protein carries a mouse IgG2a Fc tag at the C-terminus, followed by an Avi tag. The protein has a calculated MW of 75.4 kDa. The protein migrates as 100 kDa under reducing (R) condition (SDS-PAGE) due to glycosylation. The biotin to protein ratio is 0.5-1 as determined by the HABA assay.
<b>Species</b>	Human
<b>Source</b>	HEK293
<b>ProteinLength</b>	Leu 23 - Leu 450
<b>Form</b>	Lyophilized from 0.22 µm filtered solution in 50 mM Tris, 100 mM Glycine, pH7.5. Normally trehalose is added as protectant before lyophilization.
<b>Bio-activity</b>	<p>Immobilized Madarex LAG-3 Mab, Human IgG1 at 2 µg/mL (100 µL/well) can bind Recombinant Human LAG3 Protein, MIgG2a Fc &amp; Avi-tagged, Biotinylated with a linear range of 0.4-13 ng/mL (QC tested).</p> <p>Flow Cytometry assay shows that Recombinant Human LAG3 Protein, MIgG2a Fc &amp; Avi-tagged, Biotinylated can bind to daudi cell surface. The concentration of LAG-3 used is 0.3 µg/ml (Routinely tested).</p>

 Tel: 1-631-559-9269    1-516-512-3133

 Email: [info@creative-biomart.com](mailto:info@creative-biomart.com)     Fax: 1-631-938-8127

 45-1 Ramsey Road, Shirley, NY 11967, USA

<b>Molecular Mass</b>	75.4 kDa
<b>Endotoxin</b>	Less than 1.0 EU per µg by the LAL method.
<b>Purity</b>	>95% as determined by SDS-PAGE.
<b>Notes</b>	Please avoid repeated freeze-thaw cycles.
<b>Stability</b>	No activity loss is observed after storage at: 4-8 centigrade for 12 months in lyophilized state; -70 centigrade for 3 months under sterile conditions after reconstitution.
<b>Storage</b>	For long term storage, the product should be stored at lyophilized state at -20 centigrade or lower.
<b>Reconstitution</b>	It is recommended that sterile water be added to the vial to prepare a stock solution of 0.2 mg/ml. Centrifuge the vial at 4 centigrade before opening to recover the entire contents.
<b>Conjugation</b>	Biotin

## GENE INFORMATION

<b>Gene Name</b>	<a href="#">LAG3 lymphocyte-activation gene 3 [ Homo sapiens ]</a>
<b>Official Symbol</b>	<a href="#">LAG3</a>
<b>Synonyms</b>	LAG3; lymphocyte-activation gene 3; lymphocyte activation gene 3 protein; CD223;
<b>Gene ID</b>	<a href="#">3902</a>

 Tel: 1-631-559-9269 1-516-512-3133

 Email: [info@creative-biomart.com](mailto:info@creative-biomart.com)  Fax: 1-631-938-8127

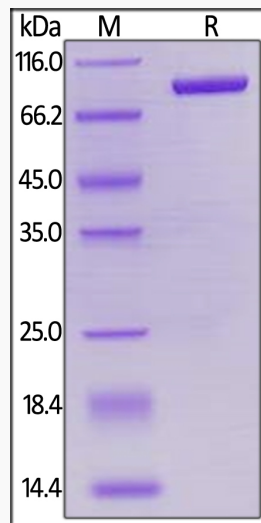
 45-1 Ramsey Road, Shirley, NY 11967, USA

mRNA Refseq [NM\\_002286](#)

Protein Refseq [NP\\_002277](#)

MIM [153337](#)

UniProt ID [P18627](#)



Tel: 1-631-559-9269 1-516-512-3133

Email: [info@creative-biomart.com](mailto:info@creative-biomart.com) Fax: 1-631-938-8127

45-1 Ramsey Road, Shirley, NY 11967, USA