

Active Recombinant Human LAG3 Protein, Fc & Avi-tagged, Biotinylated

Cat. No. LAG3-386H **Lot. No.** (See product label)

SPECIFICATION

Product Overview Recombinant Human LAG3 Protein, Fc & Avi-tagged, Biotinylated is expressed from human 293 cells (HEK293). It contains AA Leu 23 - Leu 450 (Accession # P18627-1). Predicted N-terminus: Leu 23. This protein carries a human IgG1 Fc tag at the C-terminus, followed by a Avi tag. The protein has a calculated MW of 75.0 kDa. The protein migrates as 90 kDa under reducing (R) condition (SDS-PAGE) due to glycosylation. The biotin to protein ratio is 0.5-1 as determined by the HABA assay.

Species Human

Source HEK293

ProteinLength Leu 23 - Leu 450

Form Lyophilized from 0.22 µm filtered solution in 50 mM Tris, 100 mM Glycine, 25 mM Arginine, 150 mM NaCl, pH7.5. Normally trehalose is added as protectant before lyophilization.

Bio-activity Immobilized Anti-Human LAG3 MAb, Human IgG1 at 2 µg/mL (100 µL/well) can bind Recombinant Human LAG3 Protein, Fc & Avi-tagged, Biotinylated with a linear range of 0.1-3 ng/mL (QC tested).

Molecular Mass 75.0 kDa

Endotoxin Less than 1.0 EU per

 Tel: 1-631-559-9269 1-516-512-3133

 Email: info@creative-biomart.com  Fax: 1-631-938-8127

 45-1 Ramsey Road, Shirley, NY 11967, USA

	µg by the LAL method.
Purity	>95% as determined by SDS-PAGE.
Notes	Please avoid repeated freeze-thaw cycles.
Stability	No activity loss is observed after storage at: 4-8 centigrade for 12 months in lyophilized state; -70 centigrade for 3 months under sterile conditions after reconstitution.
Storage	For long term storage, the product should be stored at lyophilized state at -20 centigrade or lower.
Reconstitution	It is recommended that sterile water be added to the vial to prepare a stock solution of 0.2 mg/ml. Centrifuge the vial at 4 centigrade before opening to recover the entire contents.
Conjugation	Biotin

GENE INFORMATION

Gene Name	LAG3 lymphocyte-activation gene 3 [Homo sapiens]
Official Symbol	LAG3
Synonyms	LAG3; lymphocyte-activation gene 3; lymphocyte activation gene 3 protein; CD223;
Gene ID	3902
mRNA Refseq	NM_002286

 Tel: 1-631-559-9269 1-516-512-3133

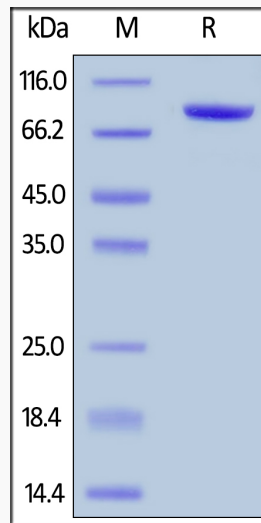
 Email: info@creative-biomart.com  Fax: 1-631-938-8127

 45-1 Ramsey Road, Shirley, NY 11967, USA

Protein Refseq NP_002277

MIM 153337

UniProt ID P18627



 Tel: 1-631-559-9269 1-516-512-3133

 Email: info@creative-biomart.com  Fax: 1-631-938-8127

 45-1 Ramsey Road, Shirley, NY 11967, USA