

Recombinant Human LAG3 Protein (Met1-Leu450), C-His tagged

Cat. No. LAG3-4400H **Lot. No.** (See product label)

SPECIFICATION

Product Overview	Recombinant human LAG3 (Met1-Leu450) fused with the C-terminal His tag was expressed in Mammalian cells.
Species	Human
Source	Mammalian Cells
ProteinLength	Met1-Leu450
Description	Lymphocyte activation gene 3 protein (LAG3) is also known as CD antigen CD223 and protein FDC, which belongs to immunoglobulin (Ig) superfamily and contains 4 extracellular Ig-like domains. The LAG3 gene contains 8 exons. The sequence data, exon/intron organization, and chromosomal localization all indicate a close relationship of LAG3 to CD4. LAG3 /CD223 involved in lymphocyte activation. LAG3 /CD223 binds to HLA class-II antigens.
Form	Lyophilized powder/frozen liquid
Molecular Mass	49.61 kDa
Endotoxin	< 1.0 EU/μg of the protein as determined by the LAL method.
Purity	>90% as determined by SDS-PAGE.

 Tel: 1-631-559-9269 1-516-512-3133

 Email: info@creative-biomart.com  Fax: 1-631-938-8127

 45-1 Ramsey Road, Shirley, NY 11967, USA

Notes	For research use only.
Storage	Use a manual defrost freezer and avoid repeated freeze thaw cycles. Store at 2 to 8 centigrade for one week. Store at -20 to -80 centigrade for twelve months from the date of receipt.
Storage Buffer	Supplied as solution form in 50 mM Tris-HCl, pH 7.5, 150 mM NaCl or lyophilized from 50 mM Tris-HCl, pH 7.5, 150 mM NaCl.
Reconstitution	Reconstitute in sterile water for a stock solution.
Shipping	They are shipped out with dry ice/blue ice unless customers require otherwise.

GENE INFORMATION

Gene Name	LAG3 lymphocyte-activation gene 3 [Homo sapiens (human)]
Official Symbol	LAG3
Synonyms	LAG3; lymphocyte-activation gene 3; lymphocyte activation gene 3 protein; CD223;
Gene ID	3902
mRNA Refseq	NM_002286
Protein Refseq	NP_002277
MIM	153337
UniProt ID	P18627

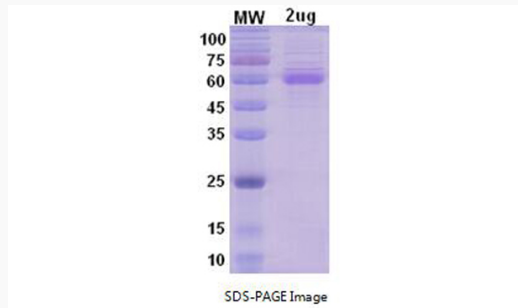
 Tel: 1-631-559-9269 1-516-512-3133

 Email: info@creative-biomart.com  Fax: 1-631-938-8127

 45-1 Ramsey Road, Shirley, NY 11967, USA



SDS-PAGE



Tel: 1-631-559-9269 1-516-512-3133

Email: info@creative-biomart.com Fax: 1-631-938-8127

45-1 Ramsey Road, Shirley, NY 11967, USA