

## Recombinant Human LAG3 protein, His-tagged

Cat. No. LAG3-4401H Lot. No. (See product label)

### SPECIFICATION

<b>Product Overview</b>	Recombinant Human LAG3 protein(P18627-1)(Leu23-Gly434), fused with C-terminal His tag, was expressed in HEK293.
<b>Species</b>	Human
<b>Source</b>	HEK293
<b>ProteinLength</b>	Leu23-Gly434
<b>Tag</b>	C-His
<b>Form</b>	Lyophilized from 0.22µm filtered solution in PBS (pH 7.4). Normally 5% trehalose is added as protectant before lyophilization.
<b>Bio-activity</b>	Immobilized Human LAG3, His Tag at 5µg/ml (100µl/Well) on the plate. Dose response curve for Human FGL1, hFc Tag with the EC50 of 0.28µg/ml determined by ELISA.
<b>Molecular Mass</b>	The protein has a predicted MW of 45.5 kDa. Due to glycosylation, the protein migrates to 55-65 kDa based on Tris-Bis PAGE result.
<b>Endotoxin</b>	Less than 1EU per µg by the LAL method.
<b>Purity</b>	> 95% as determined by Tris-Bis PAGE; > 95% as determined by HPLC

 Tel: 1-631-559-9269 1-516-512-3133

 Email: [info@creative-biomart.com](mailto:info@creative-biomart.com)  Fax: 1-631-938-8127

 45-1 Ramsey Road, Shirley, NY 11967, USA

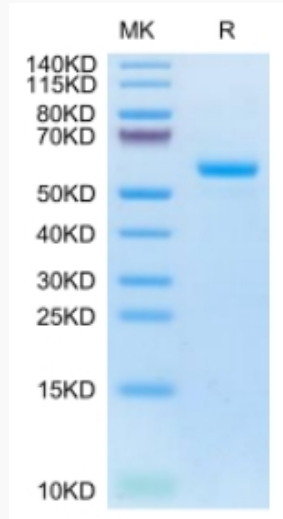
<b>Storage</b>	Reconstituted protein stable at -80°C for 12 months, 4°C for 1 week. Use a manual defrost freezer and avoid repeated freeze-thaw cycles.
<b>Reconstitution</b>	Centrifuge tubes before opening. Reconstituting to a concentration more than 100 µg/ml is recommended. Dissolve the lyophilized protein in distilled water.
<b>GENE INFORMATION</b>	
<b>Gene Name</b>	LAG3 lymphocyte-activation gene 3 [ Homo sapiens ]
<b>Official Symbol</b>	LAG3
<b>Synonyms</b>	LAG3; lymphocyte-activation gene 3; lymphocyte activation gene 3 protein; CD223;
<b>Gene ID</b>	3902
<b>mRNA Refseq</b>	NM_002286
<b>Protein Refseq</b>	NP_002277
<b>MIM</b>	153337
<b>UniProt ID</b>	P18627

 Tel: 1-631-559-9269 1-516-512-3133

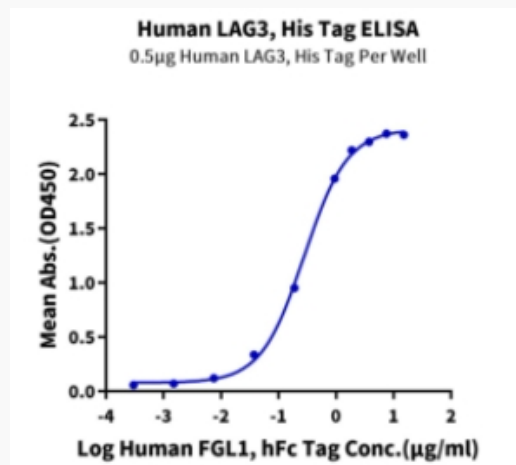
 Email: [info@creative-biomart.com](mailto:info@creative-biomart.com)  Fax: 1-631-938-8127

 45-1 Ramsey Road, Shirley, NY 11967, USA

**Tris-Bis PAGE**



**ELISA Data**



Tel: 1-631-559-9269 1-516-512-3133

Email: [info@creative-biomart.com](mailto:info@creative-biomart.com) Fax: 1-631-938-8127

45-1 Ramsey Road, Shirley, NY 11967, USA