

Recombinant Human LAG3 Protein (29-450 aa), His-GST-tagged

Cat. No. LAG3-616H **Lot. No.** (See product label)

SPECIFICATION

Product Overview Recombinant Human LAG3 Protein (29-450 aa) is produced by E. coli expression system. This protein is fused with a 6xHis-GST tag at the N-terminal. Research Area: Immunology. Protein Description: Partial.

Species Human

Source E.coli

ProteinLength 29-450 aa

Description Involved in lymphocyte activation. Binds to HLA class-II antigens.

Form Tris-based buffer, 50% glycerol

Molecular Mass 75.6 kDa

AA Sequence

```

VPVVWAQEGAPAQLPCSPTIPLQDLSLLRRAGVTWQHQPDSGPPAAAPGHPLAPG
PHPAAPSSWGPRPRRYTVLSVGPGLRSGRLPLQPRVQLDERGRQRGDFSLWLR
PARRADAGEYRAAVHLRDRALSCRLRLRLGQASMTASPPGSLRASDWVILNCSFSR
PDRPASVHWFRNRGQGRVPVRESPPHHHLAESFLFLPQVSPMDSGPWGCILTYRDG
FNVSIMYNLTVLGLEPPTPLTVYAGAGSRVGLPCRLPAGVGTRSFILTAKWTPPGGG
PDLLVTGDNGDFTLRLEDVVSQAQAGTYTCHIHLEQQQLNATVTLAIITVTPKSFSGSPG
SLGKLLCEVTPVSGQERFVWSSLDTPSQRSFSGPWLEAQEAQLLSQPWQCQLYQG
ERLLGAAVYFTELSSPGAQRSGRAPGALPAGHL
    
```

 Tel: 1-631-559-9269 1-516-512-3133

 Email: info@creative-biomart.com  Fax: 1-631-938-8127

 45-1 Ramsey Road, Shirley, NY 11967, USA

Purity	> 90% as determined by SDS-PAGE.
Notes	Repeated freezing and thawing is not recommended. Store working aliquots at 4 centigrade for up to one week.
Storage	The shelf life is related to many factors, storage state, buffer ingredients, storage temperature and the stability of the protein itself. Generally, the shelf life of liquid form is 6 months at -20 centigrade/-80 centigrade. The shelf life of lyophilized form is 12 months at -20 centigrade/-80 centigrade.
Concentration	A hardcopy of COA with concentration instruction is sent along with the products.

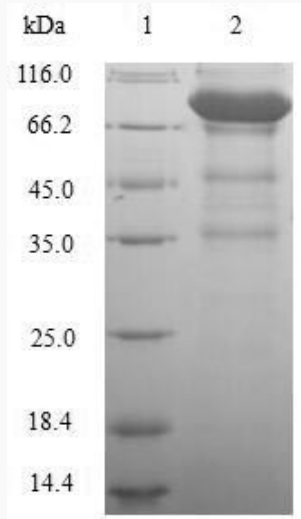
GENE INFORMATION

Gene Name	LAG3 lymphocyte-activation gene 3 [Homo sapiens]
Official Symbol	LAG3
Synonyms	LAG3; CD223;
Gene ID	3902
mRNA Refseq	NM_002286
Protein Refseq	NP_002277
MIM	153337
UniProt ID	P18627

 Tel: 1-631-559-9269 1-516-512-3133

 Email: info@creative-biomart.com  Fax: 1-631-938-8127

 45-1 Ramsey Road, Shirley, NY 11967, USA



(Tris-Glycine gel) Discontinuous SDS-PAGE (reduced) with 5% enrichment gel and 15% separation gel.

 Tel: 1-631-559-9269 1-516-512-3133

 Email: info@creative-biomart.com  Fax: 1-631-938-8127

 45-1 Ramsey Road, Shirley, NY 11967, USA