

Recombinant Human LAG3 protein, His-Avi-tagged, Biotinylated

Cat. No. LAG3-6744H **Lot. No.** (See product label)

SPECIFICATION

Product Overview	Biotinylated Recombinant Human LAG3 protein(P18627-1)(Leu23-Gly434), fused with C-terminal His and Avi tag, was expressed in HEK293.
Species	Human
Source	HEK293
ProteinLength	Leu23-Gly434
Tag	C-His-Avi
Conjugation/Label	Biotin
Form	Lyophilized from 0.22µm filtered solution in PBS (pH 7.4). Normally 5% trehalose is added as protectant before lyophilization.
Bio-activity	Immobilized Anti-LAG3 Antibody, hFc Tag at 2ug/ml (100ul/well) on the plate. Dose response curve for Biotinylated Human LAG3, His Tag with the EC50 of 17.6ng/ml determined by ELISA (QC Test).
Molecular Mass	The protein has a predicted MW of 45.5 kDa. Due to glycosylation, the protein migrates to 55-65 kDa based on Tris-Bis PAGE result.
Endotoxin	Less than 1EU per µg by the LAL method.

 Tel: 1-631-559-9269 1-516-512-3133

 Email: info@creative-biomart.com  Fax: 1-631-938-8127

 45-1 Ramsey Road, Shirley, NY 11967, USA

Purity	> 95% as determined by Tris-Bis PAGE;> 95% as determined by HPLC
Storage	Reconstituted protein stable at -80°C for 12 months, 4°C for 1 week. Use a manual defrost freezer and avoid repeated freeze-thaw cycles.
Reconstitution	Centrifuge tubes before opening. Reconstituting to a concentration more than 100 µg/ml is recommended. Dissolve the lyophilized protein in distilled water.
Conjugation	Biotin

GENE INFORMATION

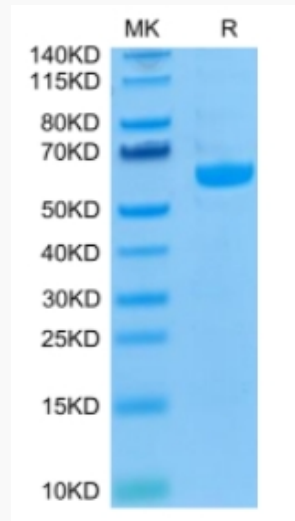
Gene Name	LAG3 lymphocyte-activation gene 3 [Homo sapiens]
Official Symbol	LAG3
Synonyms	LAG3; lymphocyte-activation gene 3; lymphocyte activation gene 3 protein; CD223;
Gene ID	3902
mRNA Refseq	NM_002286
Protein Refseq	NP_002277
MIM	153337
UniProt ID	P18627

 Tel: 1-631-559-9269 1-516-512-3133

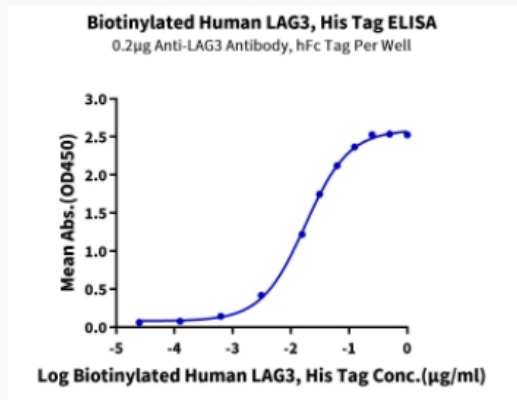
 Email: info@creative-biomart.com  Fax: 1-631-938-8127

 45-1 Ramsey Road, Shirley, NY 11967, USA

Tris-Bis PAGE



ELISA Data



 Tel: 1-631-559-9269 1-516-512-3133

 Email: info@creative-biomart.com  Fax: 1-631-938-8127

 45-1 Ramsey Road, Shirley, NY 11967, USA