

## Recombinant Human LAIR1 Protein, C-His-tagged

Cat. No. LAIR1-092H Lot. No. (See product label)

### SPECIFICATION

<b>Product Overview</b>	Recombinant Human LAIR1 Protein with C-His tag was expressed in E. coli.
<b>Species</b>	Human
<b>Source</b>	E.coli
<b>Description</b>	<p>LAIR-1 is an inhibitory receptor that belongs to the Immunoglobulin superfamily. It has one extracellular Ig-like domain and an intracellular C-terminus with two ITIM (immunoreceptor tyrosine-based inhibitory motif) domains. It is found on peripheral mononuclear cells, including NK, T, and B cells, and is thought to play a negative regulatory role on the cytolytic function of these cells through signaling through collagen ligation. LAIR1 has been noted to be upregulated in renal cell carcinoma, and may play a role in expansion of Th17 cell populations in collagen-rich environments, such as in graft rejection tissue.</p>
<b>Molecular Mass</b>	~22 kDa
<b>Purity</b>	Transferred into competent cells and the supernatant was purified by NI column affinity chromatography and the purity is > 85% (by SDS-PAGE).
<b>Notes</b>	For research use only, not for use in diagnostic procedure.
<b>Storage</b>	Store at 4 centigrade short term. Aliquot and store at -20 centigrade long term. Avoid freeze-thaw cycles.

 Tel: 1-631-559-9269 1-516-512-3133

 Email: [info@creative-biomart.com](mailto:info@creative-biomart.com)  Fax: 1-631-938-8127

 45-1 Ramsey Road, Shirley, NY 11967, USA

**Concentration** ≥0.5 mg/mL

**Storage Buffer** PBS, 4M Urea, pH7.4

## GENE INFORMATION

**Gene Name** LAIR1 leukocyte-associated immunoglobulin-like receptor 1 [ Homo sapiens (human) ]

**Official Symbol** LAIR1

**Synonyms** LAIR1; leukocyte-associated immunoglobulin-like receptor 1; leukocyte associated Ig like receptor 1; CD305; hLAIR1; leukocyte-associated Ig-like receptor 1; LAIR-1;

**Gene ID** 3903

**mRNA Refseq** NM\_002287

**Protein Refseq** NP\_002278

**MIM** 602992

**UniProt ID** Q6GTX8

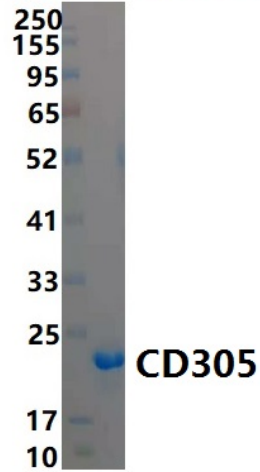
 Tel: 1-631-559-9269 1-516-512-3133

 Email: [info@creative-biomart.com](mailto:info@creative-biomart.com)  Fax: 1-631-938-8127

 45-1 Ramsey Road, Shirley, NY 11967, USA

SDS-PAGE

**SDS-PAGE experiment**



 Tel: 1-631-559-9269 1-516-512-3133

 Email: [info@creative-biomart.com](mailto:info@creative-biomart.com)  Fax: 1-631-938-8127

 45-1 Ramsey Road, Shirley, NY 11967, USA