

Recombinant Human LAIR1 Protein (Met1-Tyr165), C-His tagged

Cat. No. LAIR1-4403H Lot. No. (See product label)

SPECIFICATION

Product Overview	Recombinant human LAIR1 (Met1-Tyr165) fused with the C-terminal His tag was expressed in Mammalian cells.
Species	Human
Source	Mammalian Cells
ProteinLength	Met1-Tyr165
Form	Lyophilized powder/frozen liquid
Molecular Mass	18.15 kDa
Endotoxin	< 1.0 EU/μg of the protein as determined by the LAL method.
Purity	>90% as determined by SDS-PAGE.
Notes	For research use only.
Storage	Use a manual defrost freezer and avoid repeated freeze thaw cycles. Store at 2 to 8 centigrade for one week. Store at -20 to -80 centigrade for twelve months from the date of receipt.
Storage Buffer	Supplied as solution form in PBS or lyophilized from PBS.

 Tel: 1-631-559-9269 1-516-512-3133

 Email: info@creative-biomart.com  Fax: 1-631-938-8127

 45-1 Ramsey Road, Shirley, NY 11967, USA

Reconstitution Reconstitute in sterile water for a stock solution.

Shipping They are shipped out with dry ice/blue ice unless customers require otherwise.

GENE INFORMATION

Gene Name LAIR1 leukocyte-associated immunoglobulin-like receptor 1 [Homo sapiens (human)]

Official Symbol LAIR1

Synonyms LAIR1; leukocyte-associated immunoglobulin-like receptor 1; leukocyte associated Ig like receptor 1; CD305; hLAIR1; leukocyte-associated Ig-like receptor 1; LAIR-1;

Gene ID 3903

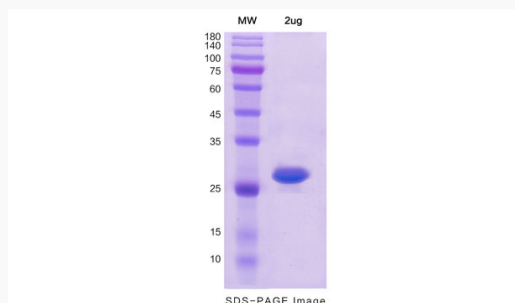
mRNA Refseq NM_002287

Protein Refseq NP_002278

MIM 602992

UniProt ID Q6GTX8

SDS-PAGE



Tel: 1-631-559-9269 1-516-512-3133

Email: info@creative-biomart.com Fax: 1-631-938-8127

45-1 Ramsey Road, Shirley, NY 11967, USA