

## Recombinant Human LAIR2 protein, Low Endotoxin

Cat. No. LAIR2-5179H Lot. No. (See product label)

### SPECIFICATION

<b>Product Overview</b>	Recombinant Human LAIR2 protein, Low Endotoxin(NP_002279.2) (Met 1- 152) was expressed and purified in HEK293.
<b>Species</b>	Human
<b>Source</b>	HEK293
<b>ProteinLength</b>	1-152 aa
<b>Form</b>	Lyophilized from sterile PBS, pH 7.4.
<b>Molecular Mass</b>	The secreted recombinant human LAIR2 comprises 131 amino acids with a predicted molecular mass of 14.1 kDa. As a result of glycosylation, the apparent molecular mass of rh LAIR2 is approximately 20 kDa in SDS-PAGE under reducing conditions.
<b>Endotoxin</b>	5 EU per 1 mg protein as determined by the LAL method.
<b>Purity</b>	> 94 % as determined by SDS-PAGE
<b>Storage</b>	Store it under sterile conditions at -20°C to -80°C upon receiving. Recommend to aliquot the protein into smaller quantities for optimal storage. Avoid repeated freeze-thaw cycles.
<b>Reconstitution</b>	It is recommended that sterile water be added to the vial to prepare a stock solution of 0.2 ug/ul. Centrifuge the vial at 4°C before opening to recover the entire contents.

 Tel: 1-631-559-9269 1-516-512-3133

 Email: [info@creative-biomart.com](mailto:info@creative-biomart.com)  Fax: 1-631-938-8127

 45-1 Ramsey Road, Shirley, NY 11967, USA

**protein Refseq-Weblink** [http://www.ncbi.nlm.nih.gov/protein/NP\\_002279.2](http://www.ncbi.nlm.nih.gov/protein/NP_002279.2)

**Unit ID** Q6ISS4

**Unit ID-Weblink** <http://www.uniprot.org/uniprot/Q6ISS4>

## GENE INFORMATION

**Gene Name** [LAIR2 leukocyte-associated immunoglobulin-like receptor 2 \[ Homo sapiens \]](#)

**Official Symbol** [LAIR2](#)

**Synonyms** LAIR2; leukocyte-associated immunoglobulin-like receptor 2; leukocyte associated Ig like receptor 2; CD306; LAIR-2; leukocyte-associated Ig-like receptor 2; leukocyte-associated Ig-like receptor-2; MGC71634;

**Gene ID** [3904](#)

**mRNA Refseq** [NM\\_002288](#)

**protein Refseq** NP\_002279

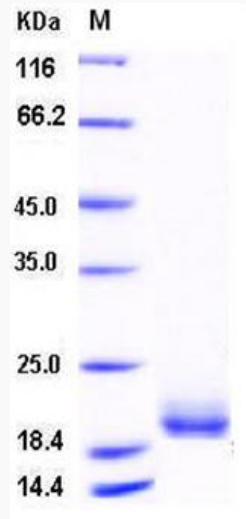
**MIM** [602993](#)

 Tel: 1-631-559-9269 1-516-512-3133

 Email: [info@creative-biomart.com](mailto:info@creative-biomart.com)  Fax: 1-631-938-8127

 45-1 Ramsey Road, Shirley, NY 11967, USA

SDS-PAGE



 Tel: 1-631-559-9269 1-516-512-3133

 Email: [info@creative-biomart.com](mailto:info@creative-biomart.com)  Fax: 1-631-938-8127

 45-1 Ramsey Road, Shirley, NY 11967, USA