

Recombinant Human LAIR2 protein, His-Avi-tagged

Cat. No. LAIR2-6854H Lot. No. (See product label)

SPECIFICATION

Product Overview	Recombinant Human LAIR2 protein(Q6ISS4-1)(Gln22-Pro152), fused with C-terminal His and Avi tag, was expressed in HEK293.
Species	Human
Source	HEK293
ProteinLength	Gln22-Pro152
Tag	C-His-Avi
Form	Lyophilized from 0.22µm filtered solution in PBS (pH 7.4). Normally 5% trehalose is added as protectant before lyophilization.
Bio-activity	Human LAIR2, His Tag captured on CM5 Chip via Anti-His Antibody can bind Native Human Collagen I protein with an affinity constant of 0.95 nM as determined in SPR assay (Biacore T200).
Molecular Mass	The protein has a predicted MW of 17 kDa. Due to glycosylation, the protein migrates to 20-25 kDa based on Tris-Bis PAGE result.
Endotoxin	Less than 1EU per µg by the LAL method.
Purity	> 95% as determined by Tris-Bis PAGE;> 95% as determined by HPLC

 Tel: 1-631-559-9269 1-516-512-3133

 Email: info@creative-biomart.com  Fax: 1-631-938-8127

 45-1 Ramsey Road, Shirley, NY 11967, USA

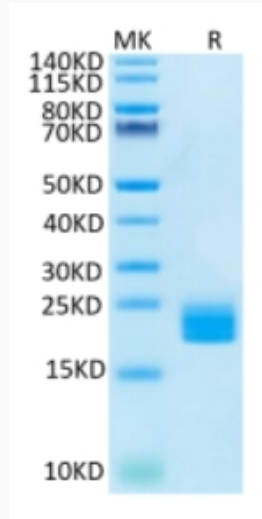
Storage	Reconstituted protein stable at -80°C for 12 months, 4°C for 1 week. Use a manual defrost freezer and avoid repeated freeze-thaw cycles.
Reconstitution	Centrifuge tubes before opening. Reconstituting to a concentration more than 100 µg/ml is recommended. Dissolve the lyophilized protein in distilled water.
GENE INFORMATION	
Gene Name	LAIR2 leukocyte-associated immunoglobulin-like receptor 2 [Homo sapiens]
Official Symbol	LAIR2
Synonyms	LAIR2; leukocyte-associated immunoglobulin-like receptor 2; leukocyte associated Ig like receptor 2; CD306; LAIR-2; leukocyte-associated Ig-like receptor 2; leukocyte-associated Ig-like receptor-2; MGC71634;
Gene ID	3904
mRNA Refseq	NM_002288
Protein Refseq	NP_002279
MIM	602993
UniProt ID	Q6ISS4

 Tel: 1-631-559-9269 1-516-512-3133

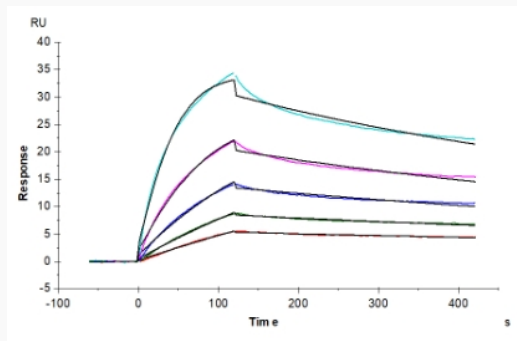
 Email: info@creative-biomart.com  Fax: 1-631-938-8127

 45-1 Ramsey Road, Shirley, NY 11967, USA

Tris-Bis PAGE



SPR Data



 Tel: 1-631-559-9269 1-516-512-3133

 Email: info@creative-biomart.com  Fax: 1-631-938-8127

 45-1 Ramsey Road, Shirley, NY 11967, USA