

Recombinant Human LALBA protein, His & T7-tagged

Cat. No. LALBA-5738H Lot. No. (See product label)

SPECIFICATION

Product Overview	Recombinant Human LALBA aa. (Ile12~Leu142 (Accession # P00709)) fused with N-terminal His & T7 tag was produced in E. coli cells.
Species	Human
Source	E.coli
ProteinLength	Ile12~Leu142
Description	This gene encodes alpha-lactalbumin, a principal protein of milk. Alpha-lactalbumin forms the regulatory subunit of the lactose synthase (LS) heterodimer and beta 1,4-galactosyltransferase (beta4Gal-T1) forms the catalytic component. Together, these proteins enable LS to produce lactose by transferring galactose moieties to glucose. As a monomer, alpha-lactalbumin strongly binds calcium and zinc ions and may possess bactericidal or antitumor activity. A folding variant of alpha-lactalbumin, called HAMLET, likely induces apoptosis in tumor and immature cells.
Form	Freeze-dried powder
Molecular Mass	Predicted Molecular Mass: 18.7kDa
Endotoxin	<1.0EU per 1g (determined by the LAL method)
Purity	>95%

 Tel: 1-631-559-9269 1-516-512-3133

 Email: info@creative-biomart.com  Fax: 1-631-938-8127

 45-1 Ramsey Road, Shirley, NY 11967, USA

Characteristic	The isoelectric point is 5.8.
Applications	SDS-PAGE; WB; ELISA; IP.
Stability	The thermal stability is described by the loss rate. The loss rate was determined by accelerated thermal degradation test, that is, incubate the protein at 37°C for 48h, and no obvious degradation and precipitation were observed. The loss rate is less than 5% within the expiration date under appropriate storage condition.
Storage	Avoid repeated freeze/thaw cycles. Store at 2-8°C for one month. Aliquot and store at -80°C for 12 months.
Storage buffer	Supplied as lyophilized form in PBS, pH7.4, containing 5% trehalose, 0.01% sarcosyl.
Reconstitution	Reconstitute in sterile PBS, pH7.2-pH7.4.

GENE INFORMATION

Gene Name	LALBA lactalbumin alpha [Homo sapiens (human)]
Official Symbol	LALBA
Synonyms	LALBA; lactalbumin alpha; LYZG; alpha-lactalbumin; lactose synthase B protein; lysozyme G; lysozyme-like protein 7
Gene ID	3906
mRNA Refseq	NM_002289.2
Protein Refseq	NP_002280.1

 Tel: 1-631-559-9269 1-516-512-3133

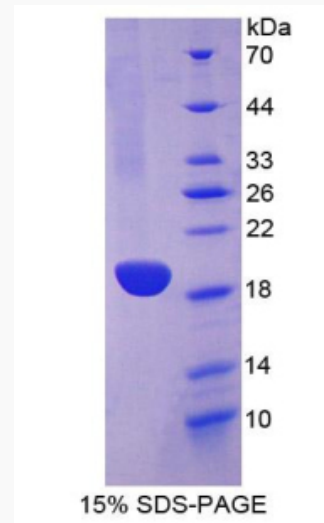
 Email: info@creative-biomart.com  Fax: 1-631-938-8127

 45-1 Ramsey Road, Shirley, NY 11967, USA

UniProt ID

P00709

SDS-PAGE



 Tel: 1-631-559-9269 1-516-512-3133

 Email: info@creative-biomart.com  Fax: 1-631-938-8127

 45-1 Ramsey Road, Shirley, NY 11967, USA