

Recombinant Human LAMB2 Protein (Asp38-His350), N-GST tagged

Cat. No. LAMB2-4411H Lot. No. (See product label)

SPECIFICATION

Product Overview	Recombinant human LAMB2 (Asp38-His350) fused with the N-GST tag was expressed in E. coli.
Species	Human
Source	E.coli
ProteinLength	Asp38-His350
Form	Lyophilized powder/frozen liquid
Molecular Mass	62.31 kDa
Purity	>90% as determined by SDS-PAGE.
Notes	For research use only.
Storage	Use a manual defrost freezer and avoid repeated freeze thaw cycles. Store at 2 to 8 centigrade for one week. Store at -20 to -80 centigrade for twelve months from the date of receipt.
Storage Buffer	0.01M PBS, pH 7.4, 0.02% NLS
Reconstitution	Reconstitute in sterile water for a stock solution.

 Tel: 1-631-559-9269 1-516-512-3133

 Email: info@creative-biomart.com  Fax: 1-631-938-8127

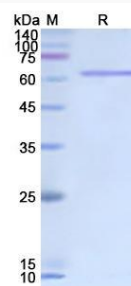
 45-1 Ramsey Road, Shirley, NY 11967, USA

Shipping They are shipped out with dry ice/blue ice unless customers require otherwise.

GENE INFORMATION

Gene Name	LAMB2 laminin, beta 2 (laminin S) [Homo sapiens (human)]
Official Symbol	LAMB2
Synonyms	LAMB2; laminin, beta 2 (laminin S); LAMS; laminin subunit beta-2; laminin S; S-LAM beta; laminin B1s chain; S-laminin subunit beta; NPHS5;
Gene ID	3913
mRNA Refseq	NM_002292
Protein Refseq	NP_002283
MIM	150325
UniProt ID	P55268

SDS-PAGE



 Tel: 1-631-559-9269 1-516-512-3133

 Email: info@creative-biomart.com  Fax: 1-631-938-8127

 45-1 Ramsey Road, Shirley, NY 11967, USA