

Recombinant Human LAMB2 protein, His-tagged

Cat. No. LAMB2-5285H Lot. No. (See product label)

SPECIFICATION

Product Overview	Recombinant Human LAMB2 protein(P55268)(1530-1798aa), fused to N-terminal His tag, was expressed in E. coli.
Species	Human
Source	E.coli
ProteinLength	1530-1798aa
Form	If the delivery form is liquid, the default storage buffer is Tris/PBS-based buffer, 5%-50% glycerol. If the delivery form is lyophilized powder, the buffer before lyophilization is Tris/PBS-based buffer, 6% Trehalose, pH 8.0.
Molecular Mass	33.3 kDa
Purity	Greater than 90% as determined by SDS-PAGE.
Storage	Store at -20°C/-80°C upon receipt, aliquoting is necessary for multiple use. Avoid repeated freeze-thaw cycles.
Reconstitution	Please reconstitute protein in deionized sterile water to a concentration of 0.1-1.0 mg/mL. We recommend to add 5-50% of glycerol (final concentration) and aliquot for long-term storage at -20°C/-80°C. Our default final concentration of glycerol is 50%.

 Tel: 1-631-559-9269 1-516-512-3133

 Email: info@creative-biomart.com  Fax: 1-631-938-8127

 45-1 Ramsey Road, Shirley, NY 11967, USA

GENE INFORMATION

Gene Name LAMB2 laminin, beta 2 (laminin S) [Homo sapiens]

Official Symbol LAMB2

Synonyms LAMB2; laminin, beta 2 (laminin S); LAMS; laminin subunit beta-2; laminin S; S-LAM beta; laminin B1s chain; S-laminin subunit beta; NPHS5;

Gene ID 3913

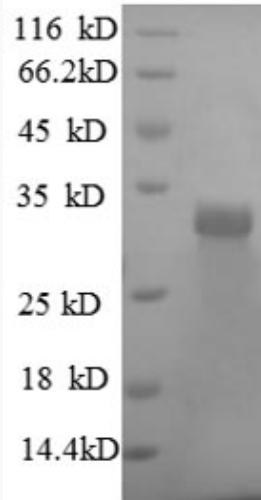
mRNA Refseq NM_002292

Protein Refseq NP_002283

MIM 150325

UniProt ID P55268

SDS-PAGE



 Tel: 1-631-559-9269 1-516-512-3133

 Email: info@creative-biomart.com  Fax: 1-631-938-8127

 45-1 Ramsey Road, Shirley, NY 11967, USA