

Recombinant Human LAMP1 Protein, C-His-tagged

Cat. No. LAMP1-093H Lot. No. (See product label)

SPECIFICATION

Product Overview Recombinant Human LAMP1 Protein with C-His tag was expressed in E. coli.

Species Human

Source E.coli

Description Lysosome-associated membrane protein 1 and 2 (LAMP1 and LAMP2) are two abundant lysosomal membrane proteins. Both are transmembrane proteins and are heavily glycosylated at the amino-terminal luminal side of the lysosomal inner leaflet, which protects the proteins from proteolysis. The carboxy terminus of LAMP1 is exposed to the cytoplasm and contains a tyrosine sorting motif that targets LAMP to lysosomal membranes. LAMP1 and LAMP2 are 37% homologous in their protein sequences. Both LAMP1 and LAMP2 are involved in regulating lysosomal motility during lysosome-phagosome fusion and cholesterol trafficking.

Molecular Mass ~39 kDa

AA Sequence

```
AMFMVKNNGTACIMANFSAAFSVNYDTKSGPKNMTFDLPSDATVVLNRSSCGKE
NTSDPSLVIAFGRGHTLTLNFTRNATRYSVQLMSFVYVYNSDTHLFPNASSKEIKTVES
ITDIRADIDKKYRCVSGTQVHMNNVTVTLHDATIQAAYLSNSSFSRGETRCEQDRPSP
TTAPPAPPSPSPSPVSPKSPVSKYVSVSGTNGTCLLASMGLQLNLTYERKDNTTCTRL
LNINPNKTSASGSCGAHLVTLELHSEGTTVLLFQFGMNASSSRFFLQGIQLNTILPDA
RDPAFKAANGSLRALQATVGNSYKCAEEHVRVTKAFSVNIFKVVVQAFKVEGGQF
GSVEECLLDENSM
```

 Tel: 1-631-559-9269 1-516-512-3133

 Email: info@creative-biomart.com  Fax: 1-631-938-8127

 45-1 Ramsey Road, Shirley, NY 11967, USA

Purity	Transferred into competent cells and the supernatant was purified by NI column affinity chromatography and the purity is > 85% (by SDS-PAGE).
Notes	For research use only, not for use in diagnostic procedure.
Storage	Store at 4 centigrade short term. Aliquot and store at -20 centigrade long term. Avoid freeze-thaw cycles.
Concentration	≥0.5 mg/mL
Storage Buffer	PBS, 4M Urea, pH7.4

GENE INFORMATION

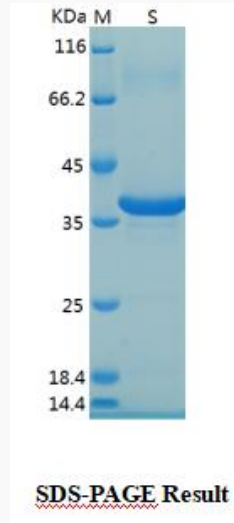
Gene Name	LAMP1 lysosomal-associated membrane protein 1 [Homo sapiens (human)]
Official Symbol	LAMP1
Synonyms	LAMP1; lysosomal-associated membrane protein 1; lysosome-associated membrane glycoprotein 1; CD107a; LAMP-1; CD107 antigen-like family member A; lysosome-associated membrane protein 1; LAMPA; LGP120;
Gene ID	3916
mRNA Refseq	NM_005561
Protein Refseq	NP_005552
MIM	153330
UniProt ID	P11279

 Tel: 1-631-559-9269 1-516-512-3133

 Email: info@creative-biomart.com  Fax: 1-631-938-8127

 45-1 Ramsey Road, Shirley, NY 11967, USA

SDS-PAGE



 Tel: 1-631-559-9269 1-516-512-3133

 Email: info@creative-biomart.com  Fax: 1-631-938-8127

 45-1 Ramsey Road, Shirley, NY 11967, USA