

## Active Recombinant Human LAMP1 protein, His-tagged

Cat. No. LAMP1-2263H Lot. No. (See product label)

### SPECIFICATION

<b>Product Overview</b>	Active Recombinant Human LAMP1 protein(NP_005552.3) (Met 1-Met 382) was expressed in HEK293, with a polyhistidine tag at the C-terminus.
<b>Species</b>	Human
<b>Source</b>	HEK293
<b>ProteinLength</b>	1-382 aa
<b>Form</b>	Lyophilized from sterile PBS, pH 7.4.
<b>Bio-activity</b>	Measured by its ability to bind biotinylated recombinant human Galectin-3 in a functional ELISA.
<b>Molecular Mass</b>	The recombinant human LAMP1 consists of 365 amino acids and predicts a molecular mass of 39.8 kDa. In SDS-PAGE under reducing conditions, the apparent molecular mass of rhLAMP1 is approximately 60-100 kDa due to high levels of glycosylation.
<b>Endotoxin</b>	< 1.0 EU per µg of the protein as determined by the LAL method.
<b>Purity</b>	> 95 % as determined by SDS-PAGE
<b>Storage</b>	Store it under sterile conditions at -20°C to -80°C upon receiving. Recommend to aliquot the protein into smaller quantities for optimal storage. Avoid repeated freeze-

 Tel: 1-631-559-9269 1-516-512-3133

 Email: [info@creative-biomart.com](mailto:info@creative-biomart.com)  Fax: 1-631-938-8127

 45-1 Ramsey Road, Shirley, NY 11967, USA

thaw cycles.

**Reconstitution**

It is recommended that sterile water be added to the vial to prepare a stock solution of 0.2 ug/ul. Centrifuge the vial at 4°C before opening to recover the entire contents.

**protein Refseq-Weblink**

[http://www.ncbi.nlm.nih.gov/protein/NP\\_005552.3](http://www.ncbi.nlm.nih.gov/protein/NP_005552.3)

**Unit ID**

P11279

**Unit ID-Weblink**

<https://www.uniprot.org/uniprotkb/P11279>

## GENE INFORMATION

**Gene Name**

[LAMP1 lysosomal-associated membrane protein 1 \[ Homo sapiens \]](#)

**Official Symbol**

[LAMP1](#)

**Synonyms**

LAMP1; lysosomal-associated membrane protein 1; lysosome-associated membrane glycoprotein 1; CD107a; LAMP-1; CD107 antigen-like family member A; lysosome-associated membrane protein 1; LAMPA; LGP120;

**Gene ID**

[3916](#)

**mRNA Refseq**

[NM\\_005561](#)

**protein Refseq**

[NP\\_005552](#)

**MIM**

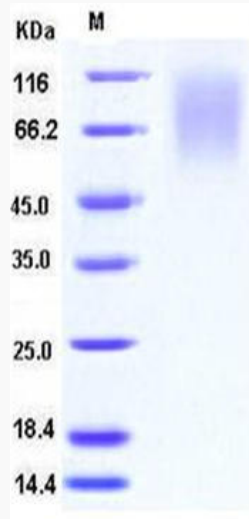
[153330](#)

 Tel: 1-631-559-9269 1-516-512-3133

 Email: [info@creative-biomart.com](mailto:info@creative-biomart.com)  Fax: 1-631-938-8127

 45-1 Ramsey Road, Shirley, NY 11967, USA

**SDS-PAGE**



 Tel: 1-631-559-9269 1-516-512-3133

 Email: [info@creative-biomart.com](mailto:info@creative-biomart.com)  Fax: 1-631-938-8127

 45-1 Ramsey Road, Shirley, NY 11967, USA