

## Recombinant Human LAMP1 Protein, His-tagged

Cat. No. LAMP1-247H Lot. No. (See product label)

### SPECIFICATION

<b>Product Overview</b>	Recombinant Human LAMP1(29-382aa) fused with His tag at C-terminal was expressed in Insect cells.
<b>Species</b>	Human
<b>Source</b>	Insect Cells
<b>ProteinLength</b>	29-382aa
<b>Description</b>	LAMP1, also known as lysosome-associated membrane glycoprotein 1, is a membrane protein that belongs to the LAMP family. It is expressed in the endosome-lysosome membranes of cells, but is also found on the plasma membrane during the activation of NK cells, CD8+ T cells, mast cells, basophils, monocytes, and platelets. A glycoform of LAMP1 is expressed on the surface of activated macrophages where it promotes T cell co-stimulation and a Th1 biased immune response.
<b>Predicted N Terminal</b>	Ala
<b>Form</b>	Liquid. In Phosphate Buffered Saline (pH 7.4) containing 10% glycerol.
<b>Molecular Mass</b>	39.4kDa (363aa) 57-70KDa (SDS-PAGE under reducing conditions.)
<b>AA Sequence</b>	ADPAMFMVKN GNGTACIMAN FSAAFSVNYD TKSGPKNMTF DLPSDATVVL NRSSCGKENT SDPSLVIAFG RGHTLTLNFT RNATRYSVQL MSFVYNLSDT HLFPNASSKE IKTVESITDI RADIDKKYRC VSGTQVHMNN

 Tel: 1-631-559-9269 1-516-512-3133

 Email: [info@creative-biomart.com](mailto:info@creative-biomart.com)  Fax: 1-631-938-8127

 45-1 Ramsey Road, Shirley, NY 11967, USA

VTVTLHDATI QAYLSNSSFS RGETRCEQDR PSPTTAPPAP  
 PSPSPSPVPK SPSVDKYNVS GTNGTCLLAS MGLQLNLTYE RKDNTTVTRL  
 LNINPNK TSA SGSCGAHLVT LELHSEGTTV LLFQFGMNAS  
 SSRFFLQGIQ LNTILPDARD PAFKAANGSL RALQATVGNS YKCNAEEHVR  
 VTKAFSVNIF KVWVQAFKVE GGQFGSVEEC LLDENSMHHH  
 HHH

**Purity** > 90% by SDS - PAGE

**Applications** SDS-PAGE

**Storage** Can be stored at +4 centigrade short term (1-2 weeks). For long term storage, aliquot and store at -20 centigrade or -70 centigrade. Avoid repeated freezing and thawing cycles.

**Concentration** 1mg/ml (determined by Absorbance at 280nm)

## GENE INFORMATION

**Gene Name** [LAMP1 lysosomal-associated membrane protein 1 \[ Homo sapiens \]](#)

**Official Symbol** [LAMP1](#)

**Synonyms** LAMP1; lysosomal-associated membrane protein 1; lysosome-associated membrane glycoprotein 1; CD107a; LAMP-1; CD107 antigen-like family member A; lysosome-associated membrane protein 1; LAMPA; LGP120;

**Gene ID** [3916](#)

**mRNA Refseq** [NM\\_005561](#)

 Tel: 1-631-559-9269 1-516-512-3133

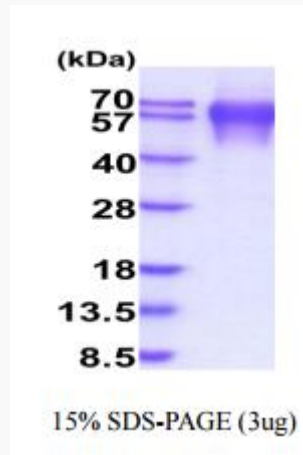
 Email: [info@creative-biomart.com](mailto:info@creative-biomart.com)  Fax: 1-631-938-8127

 45-1 Ramsey Road, Shirley, NY 11967, USA

**Protein Refseq** NP\_005552

**MIM** 153330

**UniProt ID** P11279



 Tel: 1-631-559-9269 1-516-512-3133

 Email: [info@creative-biomart.com](mailto:info@creative-biomart.com)  Fax: 1-631-938-8127

 45-1 Ramsey Road, Shirley, NY 11967, USA