

Recombinant Human LAMP1 protein, His-tagged

Cat. No. LAMP1-287H Lot. No. (See product label)

SPECIFICATION

Product Overview	Recombinant Human LAMP1 (Ala29-Met382) protein was fused to His-tag at C-terminus and expressed in human 293 cells (HEK293).
Species	Human
Source	HEK293
ProteinLength	Ala29-Met382
Description	Lysosomal-associated membrane protein 1 (LAMP1) is also known as CD107a (Cluster of Differentiation 107a). LAMP1/CD107a belongs to the LAMP family. This glycoprotein provides selectins with carbohydrate ligands. It may also play a role in tumor cell metastasis. CD107a has also been shown to be a marker of degranulation on lymphocytes such as CD8+ and NK cells.
Predicted N Terminal	Ala29
Form	Lyophilized from 0.22 µm filtered solution in PBS, pH7.4, 10% trehalose.
Molecular Mass	The protein has a calculated MW of 39.2 kDa. The protein migrates as 60-100 kDa under reducing (R) condition (SDS-PAGE) due to different glycosylation.
Endotoxin	Less than 1.0 EU per µg by the LAL method.
Purity	>95% as determined by SDS-PAGE.

 Tel: 1-631-559-9269 1-516-512-3133

 Email: info@creative-biomart.com  Fax: 1-631-938-8127

 45-1 Ramsey Road, Shirley, NY 11967, USA

Storage

For long term storage, the product should be stored at lyophilized state at -20 centigrade or lower.

Please avoid repeated freeze-thaw cycles.

This product is stable after storage at:

- 20 to -70 centigrade for 12 months in lyophilized state;
- 70 centigrade for 3 months under sterile conditions after reconstitution.

Reconstitution

It is recommended that sterile water be added to the vial to prepare a stock solution of 0.2 ug/ul. Centrifuge the vial at 4°C before opening to recover the entire contents.

GENE INFORMATION

Gene Name [LAMP1](#)

Official Symbol [LAMP1](#)

Synonyms LAMP1; lysosomal-associated membrane protein 1; lysosome-associated membrane glycoprotein 1; CD107a; LAMP-1; CD107 antigen-like family member A; lysosome-associated membrane protein 1; LAMPA; LGP120

Gene ID [3916](#)

mRNA Refseq [NM_005561](#)

Protein Refseq [NP_005552](#)

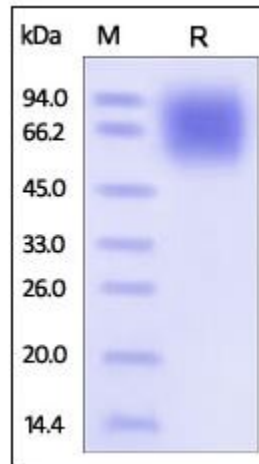
MIM [153330](#)

UniProt ID [P11279](#)

 Tel: 1-631-559-9269 1-516-512-3133

 Email: info@creative-biomart.com  Fax: 1-631-938-8127

 45-1 Ramsey Road, Shirley, NY 11967, USA

**SDS-PAGE of
LAMP1-287H**

Human LAMP1, His Tag on SDS-PAGE under reducing (R) condition. The gel was stained overnight with Coomassie Blue. The purity of the protein is greater than 95%.

 Tel: 1-631-559-9269 1-516-512-3133

 Email: info@creative-biomart.com  Fax: 1-631-938-8127

 45-1 Ramsey Road, Shirley, NY 11967, USA