

Recombinant Human LAMP1 Protein (Ala29-Met382), C-Fc tagged

Cat. No. LAMP1-4415H Lot. No. (See product label)

SPECIFICATION

Product Overview	Recombinant human LAMP1 (Ala29-Met382) fused with the C-terminal Fc tag was expressed in mammalian cells.
Species	Human
Source	Mammalian Cells
ProteinLength	Ala29-Met382
Form	Lyophilized powder/frozen liquid
Molecular Mass	63.94 kDa
Endotoxin	< 1.0 EU/μg of the protein as determined by the LAL method.
Purity	>90% as determined by SDS-PAGE.
Notes	For research use only.
Storage	Use a manual defrost freezer and avoid repeated freeze thaw cycles. Store at 2 to 8 centigrade for one week. Store at -20 to -80 centigrade for twelve months from the date of receipt.
Storage Buffer	Supplied as solution form in PBS or lyophilized from PBS.

 Tel: 1-631-559-9269 1-516-512-3133

 Email: info@creative-biomart.com  Fax: 1-631-938-8127

 45-1 Ramsey Road, Shirley, NY 11967, USA

Reconstitution Reconstitute in sterile water for a stock solution.

Shipping They are shipped out with dry ice/blue ice unless customers require otherwise.

GENE INFORMATION

Gene Name LAMP1 lysosomal-associated membrane protein 1 [Homo sapiens (human)]

Official Symbol LAMP1

Synonyms LAMP1; lysosomal-associated membrane protein 1; lysosome-associated membrane glycoprotein 1; CD107a; LAMP-1; CD107 antigen-like family member A; lysosome-associated membrane protein 1; LAMPA; LGP120;

Gene ID 3916

mRNA Refseq NM_005561

Protein Refseq NP_005552

MIM 153330

UniProt ID P11279

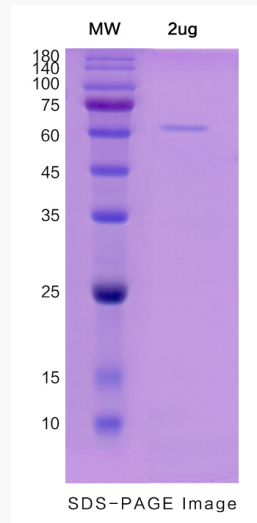
 Tel: 1-631-559-9269 1-516-512-3133

 Email: info@creative-biomart.com  Fax: 1-631-938-8127

 45-1 Ramsey Road, Shirley, NY 11967, USA



SDS-PAGE



Tel: 1-631-559-9269 1-516-512-3133

Email: info@creative-biomart.com Fax: 1-631-938-8127

45-1 Ramsey Road, Shirley, NY 11967, USA