

# Recombinant Human LAMP1 Protein, Myc/DDK-tagged, C13 and N15-labeled

Cat. No. LAMP1-6521H Lot. No. (See product label)

## SPECIFICATION

<b>Product Overview</b>	LAMP1 MS Standard C13 and N15-labeled recombinant protein (NP_005552) with a C-terminal MYC/DDK tag, was expressed in HEK293 cells.
<b>Species</b>	Human
<b>Source</b>	HEK293
<b>Description</b>	The protein encoded by this gene is a member of a family of membrane glycoproteins. This glycoprotein provides selectins with carbohydrate ligands. It may also play a role in tumor cell metastasis.
<b>Molecular Mass</b>	44.88 kDa
<b>AA Sequence</b>	<p>MAAPGSARRPLLLLLLLLLLGLMHCAAMFMVKNNGTACIMANFSAAFSVNYDTK            SGPKNMTFDLPSDATVVLNRSSCGKENTSDPSLVIAFGRGHTLTLNFTRNATRYSVQ            LMSFVYNLSDTHLFPNASSKEIKTVESITDIRADIDKKYRCVSGTQVHMNNVTVLHD            ATIQAYLSNSSFSRGETRCEQDRPSPTTAPPAPPSPSPSPVPKSPSVDKYNVSGTN            GTCLLASMGLQLNLTYERKDNTTVTRLLNINPNKTSASGSCGAHLVTLELHSEGTTV            LLFQFGMNASSSRFFLQGIQLNTILPDARDPAFKAANGSLRALQATVGNSYKCNAEE            HVRVTKAFSVNIFKVWVQAFKVEGGQFGSVEECLLDENSMLIPIAVGGALAGLVLIVLI            AYLVGRKRSHAGYQTITRTRPLEQKLISEEDLAANDILDYKDDDDKV</p>
<b>Purity</b>	> 80% as determined by SDS-PAGE and Coomassie blue staining

 Tel: 1-631-559-9269 1-516-512-3133

 Email: [info@creative-biomart.com](mailto:info@creative-biomart.com)  Fax: 1-631-938-8127

 45-1 Ramsey Road, Shirley, NY 11967, USA

<b>Stability</b>	Stable for 3 months from receipt of products under proper storage and handling conditions.
<b>Storage</b>	Store at -80 centigrade. Avoid repeated freeze-thaw cycles.
<b>Concentration</b>	50 µg/mL as determined by BCA
<b>Storage Buffer</b>	100 mM glycine, 25 mM Tris-HCl, pH 7.3.

## GENE INFORMATION

<b>Gene Name</b>	LAMP1 lysosomal-associated membrane protein 1 [ Homo sapiens (human) ]
<b>Official Symbol</b>	LAMP1
<b>Synonyms</b>	LAMP1; lysosomal-associated membrane protein 1; lysosome-associated membrane glycoprotein 1; CD107a; LAMP-1; CD107 antigen-like family member A; lysosome-associated membrane protein 1; LAMPA; LGP120;
<b>Gene ID</b>	3916
<b>mRNA Refseq</b>	NM_005561
<b>Protein Refseq</b>	NP_005552
<b>MIM</b>	153330
<b>UniProt ID</b>	P11279

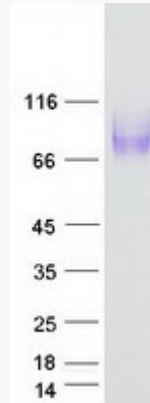
 Tel: 1-631-559-9269 1-516-512-3133

 Email: [info@creative-biomart.com](mailto:info@creative-biomart.com)  Fax: 1-631-938-8127

 45-1 Ramsey Road, Shirley, NY 11967, USA



SDS-PAGE



Tel: 1-631-559-9269 1-516-512-3133

Email: [info@creative-biomart.com](mailto:info@creative-biomart.com) Fax: 1-631-938-8127

45-1 Ramsey Road, Shirley, NY 11967, USA