

Recombinant Human LAMP1 protein, His & GST-tagged

Cat. No. LAMP1-6966H Lot. No. (See product label)

SPECIFICATION

Product Overview	Recombinant Human LAMP1 aa. (Ala49~Ser297 (Accession # P11279)) fused with N-terminal His & GST tag was produced in E. coli cells.
Species	Human
Source	E.coli
ProteinLength	Ala49~Ser297
Description	The protein encoded by this gene is a member of a family of membrane glycoproteins. This glycoprotein provides selectins with carbohydrate ligands. It may also play a role in tumor cell metastasis.
Form	Freeze-dried powder
Molecular Mass	Predicted Molecular Mass: 58.9kDa
Endotoxin	<1.0EU per 1ug (determined by the LAL method)
Purity	>95%
Characteristic	The isoelectric point is 6.6.
Applications	SDS-PAGE; WB; ELISA; IP

 Tel: 1-631-559-9269 1-516-512-3133

 Email: info@creative-biomart.com  Fax: 1-631-938-8127

 45-1 Ramsey Road, Shirley, NY 11967, USA

Stability	The thermal stability is described by the loss rate. The loss rate was determined by accelerated thermal degradation test, that is, incubate the protein at 37°C for 48h, and no obvious degradation and precipitation were observed. The loss rate is less than 5% within the expiration date under appropriate storage condition.
Storage	Avoid repeated freeze/thaw cycles. Store at 2-8°C for one month. Aliquot and store at -80°C for 12 months.
Storage buffer	Supplied as lyophilized form in PBS, pH7.4, containing 5% sucrose, 0.01% sarcosyl.
Reconstitution	Reconstitute in sterile PBS, pH7.2-pH7.4.

GENE INFORMATION

Gene Name	LAMP1 lysosomal associated membrane protein 1 [Homo sapiens (human)]
Official Symbol	LAMP1
Synonyms	LAMP1; lysosomal associated membrane protein 1; LAMPA; CD107a; LGP120; lysosome-associated membrane glycoprotein 1; CD107 antigen-like family member A; LAMP-1; lysosome-associated membrane protein 1
Gene ID	3916
mRNA Refseq	NM_005561.3
Protein Refseq	NP_005552.3
UniProt ID	P11279

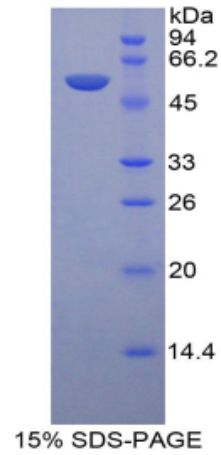
 Tel: 1-631-559-9269 1-516-512-3133

 Email: info@creative-biomart.com  Fax: 1-631-938-8127

 45-1 Ramsey Road, Shirley, NY 11967, USA



SDS-PAGE



Tel: 1-631-559-9269 1-516-512-3133

Email: info@creative-biomart.com Fax: 1-631-938-8127

45-1 Ramsey Road, Shirley, NY 11967, USA