

Recombinant Full Length Human LAMP2 Protein, C-Flag-tagged

Cat. No. LAMP2-170HFL **Lot. No.** (See product label)

SPECIFICATION

Product Overview

Recombinant Full Length Human LAMP2 Protein, fused to Flag-tag at C-terminus, was expressed in Mammalian cells.

Species

Human

Source

Mammalian Cells

Description

The protein encoded by this gene is a member of a family of membrane glycoproteins. This glycoprotein provides selectins with carbohydrate ligands. It may play a role in tumor cell metastasis. It may also function in the protection, maintenance, and adhesion of the lysosome. Alternative splicing of this gene results in multiple transcript variants encoding distinct proteins.

Form

25 mM Tris HCl, pH 7.3, 100 mM glycine, 10% glycerol.

Molecular Mass

42 kDa

AA Sequence

MVCFRLFPVPGSGLVLVCLVLGAVRSYALELNLTDSENATCLYAKWQMNFTVRYET
 TNKTYKTVTISDHG TVTYNGSICGDDQNGPKIAVQFGPGFSWIANFTKAASTYSIDS
 VSFSYNTGDNTTFPDAEDKGILTVDL LAIRIPLNDFRCNSLSTLEKNDVVQHYWD
 VLVQAFVQNGTVSTNEFLCDKDKTSTVAPTIHTTVPSPTT TPTPKKEPEAGTYSVNN
 GNDTCLLATMGLQLNITQDKVASVININPNTTHSTGSCRSHALLRLNSSTIK YLDFV
 FAVKNENRFYLKEVNISMVYLVNGSVFSIANNNLSYWDAPLGSSYMCNKEQTVSVSG
 AFQINTFDL

 Tel: 1-631-559-9269 1-516-512-3133

 Email: info@creative-biomart.com  Fax: 1-631-938-8127

 45-1 Ramsey Road, Shirley, NY 11967, USA

RVQPFNVTQGKYSTAQECSLDDDTILIPVVGAGLSGLIIVIVIAVIGRRKSYAGYQTLT
RTRPLEQKLISEEDLAANDILDYKDDDDKV

Purity	> 80% as determined by SDS-PAGE and Coomassie blue staining.
Stability	Stable for 12 months from the date of receipt of the product under proper storage and handling conditions. Avoid repeated freeze-thaw cycles.
Storage	Store at -80 centigrade.
Concentration	>50 ug/mL as determined by microplate BCA method.
Preparation	Recombinant protein was captured through anti-DDK affinity column followed by conventional chromatography steps.
Protein Families	Druggable Genome, ES Cell Differentiation/IPS, Transmembrane
Protein Pathways	Lysosome
Full Length	Full L.

GENE INFORMATION

Gene Name	LAMP2 lysosomal associated membrane protein 2 [Homo sapiens (human)]
Official Symbol	LAMP2
Synonyms	DND; LAMPB; CD107b; LAMP-2; LGP-96; LGP110
Gene ID	3920

 Tel: 1-631-559-9269 1-516-512-3133

 Email: info@creative-biomart.com  Fax: 1-631-938-8127

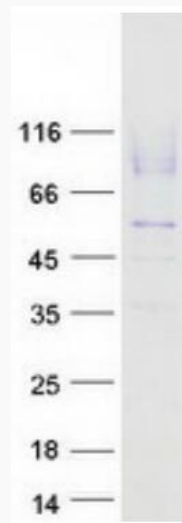
 45-1 Ramsey Road, Shirley, NY 11967, USA

mRNA Refseq [NM_013995.2](#)

Protein Refseq [NP_054701.1](#)

MIM [309060](#)

UniProt ID [P13473](#)



Coomassie blue staining of purified LAMP2 protein.

 Tel: 1-631-559-9269 1-516-512-3133

 Email: info@creative-biomart.com  Fax: 1-631-938-8127

 45-1 Ramsey Road, Shirley, NY 11967, USA