

## Recombinant Human LAMP2 Protein, His-tagged

Cat. No. LAMP2-233H Lot. No. (See product label)

### SPECIFICATION

<b>Product Overview</b>	Recombinant Human LAMP2(29-375aa) fused with His tag at C-terminal was expressed in Insect cells.
<b>Species</b>	Human
<b>Source</b>	Insect Cells
<b>ProteinLength</b>	29-375aa
<b>Description</b>	LAMP2, also known as lysosome-associated membrane glycoprotein 2 isoform A, is a major component of lysosomal membranes. It provides selectins with carbohydrate ligands. This protein mediates the lysosomal uptake of the chaperone HSC73 in complex with cargo proteins and is required for the lysosomal destruction of autophagic vacuoles. Deficiency of LAMP2 is a rare X-linked lysosomal disease characterized by cardiomyopathy, vacuolar myopathy, and mental retardation.
<b>Predicted N Terminal</b>	Ala
<b>Form</b>	Liquid. In Phosphate Buffered Saline (pH 7.4) containing 10% glycerol.
<b>Molecular Mass</b>	39.4kDa (356aa) 57-70KDa (SDS-PAGE under reducing conditions.)
<b>AA Sequence</b>	ADPLELNLTD SENATCLYAK WQMNFTVRYE TTNKTYKTVT ISDHGTVTYN GSICGDDQNG PKIAVQFGPG FSWIANFTKA ASTYSIDSVS FSYNTGDNTT FPDAEDKGIL TVDELLAIRI PLNDLFR CNS LSTLEKNDVV

 Tel: 1-631-559-9269 1-516-512-3133

 Email: [info@creative-biomart.com](mailto:info@creative-biomart.com)  Fax: 1-631-938-8127

 45-1 Ramsey Road, Shirley, NY 11967, USA

QHYWDVLVQA FVQNGTVSTN EFLCDKDKTS TVAPTIHTTV  
 PSPTTTPPK EKPEAGTYSV NNGNDTCLA TMGLQLNITQ DKVASVININ  
 PNTTHSTGSC RSHTALLRLN SSTIKYLDFV FAVKNENRFY  
 LKEVNISMYL VNGSVFSIAN NNLSYWDAPL GSSYMCNKEQ TVSVSGAFQI  
 NTFDLRVQPF NVTQGKYSTA QDCSADDDNF HHHHHH

**Purity** > 90% by SDS - PAGE

**Applications** SDS-PAGE

**Storage** Can be stored at +4 centigrade short term (1-2 weeks). For long term storage, aliquot and store at -20 centigrade or -70 centigrade. Avoid repeated freezing and thawing cycles.

**Concentration** 0.5 mg/ml (determined by Absorbance at 280)

## GENE INFORMATION

**Gene Name** [LAMP2 lysosomal-associated membrane protein 2 \[ Homo sapiens \]](#)

**Official Symbol** [LAMP2](#)

**Synonyms** LAMP2; lysosomal-associated membrane protein 2; lysosome-associated membrane glycoprotein 2; CD107b; CD107 antigen-like family member B; lysosome-associated membrane protein 2; LAMPB; LAMP-2; LGP110;

**Gene ID** [3920](#)

**mRNA Refseq** [NM\\_001122606](#)

**Protein Refseq** [NP\\_001116078](#)

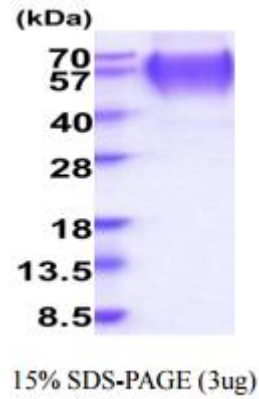
 Tel: 1-631-559-9269 1-516-512-3133

 Email: [info@creative-biomart.com](mailto:info@creative-biomart.com)  Fax: 1-631-938-8127

 45-1 Ramsey Road, Shirley, NY 11967, USA

**MIM** 309060

**UniProt ID** P13473



 Tel: 1-631-559-9269 1-516-512-3133

 Email: [info@creative-biomart.com](mailto:info@creative-biomart.com)  Fax: 1-631-938-8127

 45-1 Ramsey Road, Shirley, NY 11967, USA