

# Recombinant Human LAMP2 Protein, Myc/DDK-tagged, C13 and N15-labeled

Cat. No. LAMP2-3391H Lot. No. (See product label)

## SPECIFICATION

### Product Overview

LAMP2 MS Standard C13 and N15-labeled recombinant protein (NP\_054701) with a C-terminal MYC/DDK tag, was expressed in HEK293 cells.

### Species

Human

### Source

HEK293

### Description

The protein encoded by this gene is a member of a family of membrane glycoproteins. This glycoprotein provides selectins with carbohydrate ligands. It may play a role in tumor cell metastasis. It may also function in the protection, maintenance, and adhesion of the lysosome. Alternative splicing of this gene results in multiple transcript variants encoding distinct proteins.

### Molecular Mass

45 kDa

### AA Sequence

MVCFRLFPVPGSGLVLVCLVLGAVRSYALELNLTDSENATCLYAKWQMNFTVRYET  
 TNKTYKTVTISDHGTVTYNGSICGDDQNGPKIAVQFGPGFSWIANFTKAASTYSIDSV  
 SFSYNTGDNTTFPDAEDKGILTVDELLAIRIPLNDFRCNSLSTLEKNDVVQHYWDVL  
 VQAFVQNGTVSTNEFLCDKDKTSTVAPTIHTTVPSPTTTPKEKPEAGTYSVNNGN  
 DTCLLATMGLQLNITQDKVASVININPNTTHSTGSCRSHALLRLNSSTIKYLDFVFAV  
 KNENRFYLKEVNISMVYLVNGSVFSIANNNLSYWDAPLGSSYMCNKEQTVSVSGAFQI  
 NTFDLRVQPFNVTQGKYSTAQECSLDDDTILIPPIVAGLSGLIIVIVIAIYVIGRRKSYAG  
 YQTLTRTRPLEQKLISEEDLAANDILDYKDDDDKV

 Tel: 1-631-559-9269 1-516-512-3133

 Email: [info@creative-biomart.com](mailto:info@creative-biomart.com)  Fax: 1-631-938-8127

 45-1 Ramsey Road, Shirley, NY 11967, USA

<b>Purity</b>	> 80% as determined by SDS-PAGE and Coomassie blue staining
<b>Stability</b>	Stable for 3 months from receipt of products under proper storage and handling conditions.
<b>Storage</b>	Store at -80 centigrade. Avoid repeated freeze-thaw cycles.
<b>Concentration</b>	50 µg/mL as determined by BCA
<b>Storage Buffer</b>	100 mM glycine, 25 mM Tris-HCl, pH 7.3.

## GENE INFORMATION

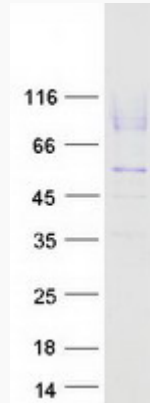
<b>Gene Name</b>	LAMP2 lysosomal-associated membrane protein 2 [ Homo sapiens (human) ]
<b>Official Symbol</b>	LAMP2
<b>Synonyms</b>	LAMP2; lysosomal-associated membrane protein 2; lysosome-associated membrane glycoprotein 2; CD107b; CD107 antigen-like family member B; lysosome-associated membrane protein 2; LAMPB; LAMP-2; LGP110;
<b>Gene ID</b>	3920
<b>mRNA Refseq</b>	NM_013995
<b>Protein Refseq</b>	NP_054701
<b>MIM</b>	309060
<b>UniProt ID</b>	P13473

 Tel: 1-631-559-9269 1-516-512-3133

 Email: [info@creative-biomart.com](mailto:info@creative-biomart.com)  Fax: 1-631-938-8127

 45-1 Ramsey Road, Shirley, NY 11967, USA

**SDS-PAGE**



 Tel: 1-631-559-9269 1-516-512-3133

 Email: [info@creative-biomart.com](mailto:info@creative-biomart.com)  Fax: 1-631-938-8127

 45-1 Ramsey Road, Shirley, NY 11967, USA