

Recombinant Human LAMP2 Protein (Met1-Phe375), C-His tagged

Cat. No. LAMP2-4417H Lot. No. (See product label)

SPECIFICATION

Product Overview	Recombinant human LAMP2 (Met1-Phe375) fused with the C-terminal His tag was expressed in Mammalian cells.
Species	Human
Source	Mammalian Cells
ProteinLength	Met1-Phe375
Form	Lyophilized powder/frozen liquid
Molecular Mass	41.25 kDa
Endotoxin	< 1.0 EU/μg of the protein as determined by the LAL method.
Purity	>90% as determined by SDS-PAGE.
Notes	For research use only.
Storage	Use a manual defrost freezer and avoid repeated freeze thaw cycles. Store at 2 to 8 centigrade for one week. Store at -20 to -80 centigrade for twelve months from the date of receipt.
Storage Buffer	Supplied as solution form in PBS or lyophilized from PBS.

 Tel: 1-631-559-9269 1-516-512-3133

 Email: info@creative-biomart.com  Fax: 1-631-938-8127

 45-1 Ramsey Road, Shirley, NY 11967, USA

Reconstitution Reconstitute in sterile water for a stock solution.

Shipping They are shipped out with dry ice/blue ice unless customers require otherwise.

GENE INFORMATION

Gene Name LAMP2 lysosomal-associated membrane protein 2 [Homo sapiens (human)]

Official Symbol LAMP2

Synonyms LAMP2; lysosomal-associated membrane protein 2; lysosome-associated membrane glycoprotein 2; CD107b; CD107 antigen-like family member B; lysosome-associated membrane protein 2; LAMPB; LAMP-2; LGP110;

Gene ID 3920

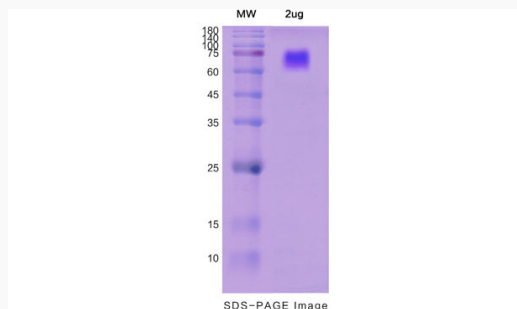
mRNA Refseq NM_001122606

Protein Refseq NP_001116078

MIM 309060

UniProt ID P13473

SDS-PAGE



Tel: 1-631-559-9269 1-516-512-3133

Email: info@creative-biomart.com Fax: 1-631-938-8127

45-1 Ramsey Road, Shirley, NY 11967, USA